



# **South-Point Constructors**

**DIVERSE SUBCONTRACTOR & SUPPLIER  
OUTREACH**

---

**SOUTHEAST CONNECTOR PROJECT**

**August 31, 2022**

# **WELCOME!**

# AGENDA

---

- Welcome
- **NCTRCA DBE Certification Overview**
- South-Point Constructors Team Introduction
- Southeast Connector Project Overview
- Upcoming Bid Opportunities
- Bid Process
- Working with SPC
- Closing Comments
- **Stations and Networking**

# NCTRCA DBE CERTIFICATION OVERVIEW

---



**Presented by:**

Mr. Sherman Powers,  
Executive Director

North Central Texas Regional Certification Agency (NCTRCA)



NCTRCA  
2261 BROOKHOLLOW PLAZA DR., SUITE 300  
ARLINGTON, TX 76006

## Introduction to Certification

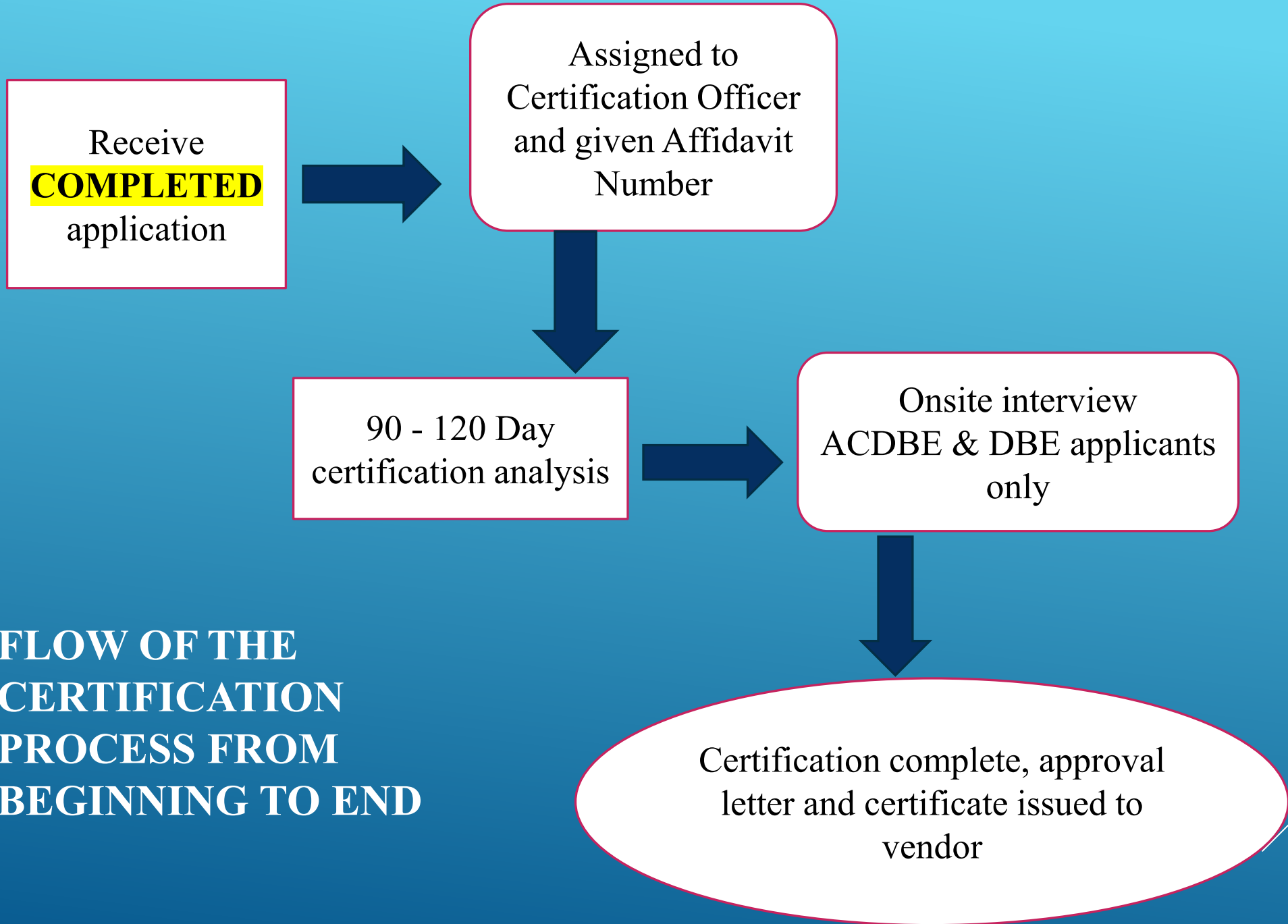
# TYPES OF CERTIFICATION FEDERAL AND LOCAL

## ▶ Federal Programs –

- ▶ ACDBE – Airport Concessionaire Disadvantaged Business Enterprise
- ▶ DBE – Disadvantaged Business Enterprise

## LOCAL Programs –

- ▶ MBE – Minority Business Enterprise
- ▶ SBE – Small Business Enterprise
- ▶ WBE – Woman-Owned Business Enterprise
- ▶ SBEC-Small Business Enterprise Concessions



**FLOW OF THE  
CERTIFICATION  
PROCESS FROM  
BEGINNING TO END**

RECEIPT OF  
**COMPLETE**  
APPLICATION

VERIFICATION OF  
OWNERSHIP &  
CONTROL

VERIFICATION OF  
MANAGEMENT  
EXPERIENCE

VERIFICATION OF  
BUSINESS ASSETS  
(ACDBE, DBE, SBE –  
SBA size standard  
applies)

VERIFICATION OF  
PHYSICAL ADDRESS  
OF THE BUSINESS

CERTIFICATION  
APPLICATION  
PROCESSING FEE

## 6 KEY ELEMENTS TO THE CERTIFICATION PROCESS

Three white lines of varying lengths and angles are positioned in the bottom right corner of the slide, creating a modern, abstract graphic element.

# HOW TO QUALIFY FOR CERTIFICATION

The firm must be 51% or more owned and controlled by a minority or female

For ACDBE & DBE certification – Personal Net Worth cannot exceed \$1.32 million

For ACDBE gross receipts cannot exceed \$56.42 million (5-year average)

For DBE & SBE gross receipts cannot exceed \$28.48 million (5-year average)

The minority or female ownership and control cannot be restricted by an outside firm or non-qualifying individual.

Each certification record is viewed as a whole; and each record is different and processed on a case-by-case basis.



# IMPORTANT DOCUMENTS

**COMPLETE**  
APPLICATION

FOR DBE & ACDBE  
APPLICATIONS YOU MUST  
HAVE A PERSONAL NET  
WORTH STATEMENT WITH  
**NO BLANK SECTIONS**

LEASE AGREEMENT  
OR MORTGAGE  
STATEMENT

BANK SIGNATURE  
CARD OR A LETTER  
FROM THE BANK  
LISTING THE  
SIGNATORIES ON THE  
FIRM'S ACCOUNTS

BIRTH CERTIFICATE,  
DRIVER'S LICENSE,  
STATE IDENTIFICATION  
CARD, OR PASSPORT  
– COLOR COPY WITH  
A CLEAR PICTURE

IF CLAIMING  
NATIVE AMERICAN  
STATUS – TRIBAL  
CARD IS REQUIRED

CASHIER'S CHECK  
OR MONEY ORDER  
FOR PROCESSING  
FEE - \$100.00

# ACDBE AND DBE APPLICATIONS

Processing fee

- ▶ There is no charge for **ACDBE or DBE** application processing.
- ▶ This is a federal program and there are **no fees** associated with it.

# CERTIFICATION AGENCIES IN THE DFW METROPLEX

- ▶ DFW MINORITY SUPPLIER DEVELOPMENT COUNCIL, INC (\$270-800)
- ▶ WOMEN'S BUSINESS COUNCIL SOUTHWEST (\$350-1250)
- ▶ NORTH CENTRAL TEXAS REGIONAL CERTIFICATION AGENCY
  - ▶ **New Application M/S/WBE & SBEC- \$100 (As Many Local Certifications As You Qualify For)**
  - ▶ **Out of Jurisdiction (NCTRCA 16 Counties) - \$250**
  - ▶ **ACDBE/DBE - FREE**

# APPLICATION FEE INCREASE

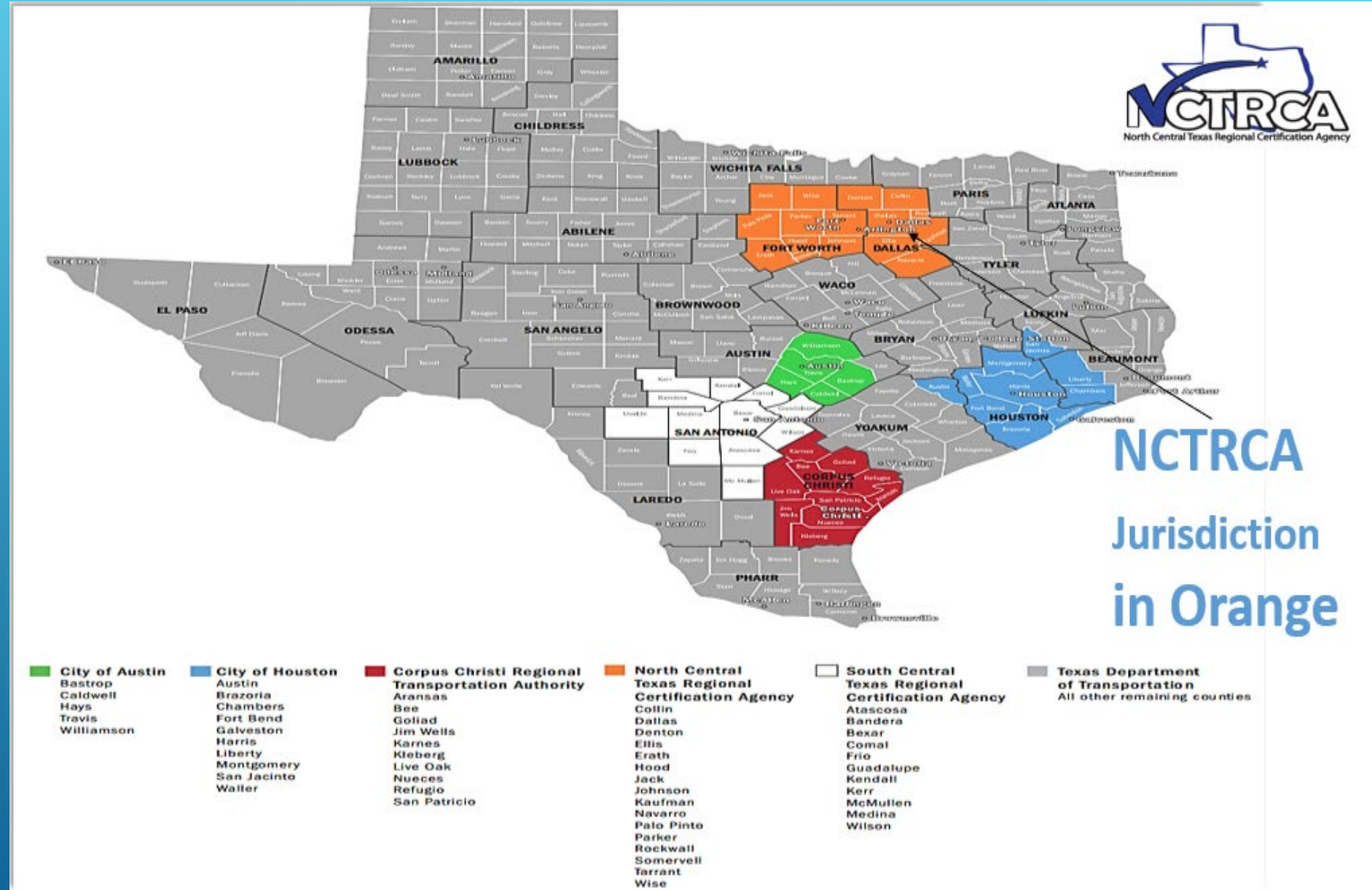
As of September 1, 2022, a non-refundable application fee is required. The fees are as follows:

APPLICATION	FEES	RENEWAL FEE-EVERY TWO YEARS
1st Certification	\$150	\$75
APPLICATION	FEES	RENEWAL FEE-EVERY TWO YEARS
2nd Certification	\$100	\$75
APPLICATION	FEES	RENEWAL FEE-EVERY TWO YEARS
3rd Certification	\$75	\$75
APPLICATION	FEES	RENEWAL FEE-EVERY TWO YEARS
4th Certification	\$75	\$75

# TEXAS UNITED CERTIFICATION PROGRAM (TUCP) JURISDICTIONAL MAP

## North Central Texas Regional Certification Agency

Collin  
Dallas  
Denton  
Ellis  
Erath  
Hood  
Jack  
Johnson  
Kaufman  
Navarro  
Palo Pinto  
Parker  
Rockwall  
Somervell  
Tarrant  
Wise



# 24 PUBLIC AND GOVERNMENTAL MEMBER ENTITIES

- ▶ City of Arlington
- ▶ City of Cedar Hill
- ▶ City of Dallas
- ▶ City of Desoto
- ▶ City of Duncanville
- ▶ City of Fort Worth
- ▶ City of Irving
- ▶ City of Lancaster
- ▶ City of Mesquite
- ▶ City of Grand Prairie
- ▶ Dallas Area Rapid Transit (DART)
- ▶ Parkland Hospital
- ▶ Dallas County
- ▶ Dallas College (DC)
- ▶ DFW Airport
- ▶ Dallas Independent School District (DISD)
- ▶ Fort Worth Independent School District (FWISD)
- ▶ Trinity Metro Transit Authority
- ▶ North Texas Tollway Authority (NTTA)
- ▶ Tarrant County
- ▶ Tarrant County College District (TCCD)
- ▶ Tarrant Regional Water District (TRWD)
- ▶ Austin Industries (Associate Member)
- ▶ Ferrovia Agroman-US (Associate Member)

# Public & Governmental Member Entities



# You're Certified!

## Now What?

Register

Go to NCTRCA's website, click on Member Bids, and start bidding on the bids of the 24 Member Entities.

Attend

Attend Member Entities pre-bid meetings.

Attend

Attend Member Entities outreach events.

Network

Network, Network, Network

# You're Certified! Now What?

Company Name

Covenant Capital, LLC

Ascension Business Capital

DFW WBC Lift Fund

SBA-Small Business Association

Insperity

TruFund

Lendio-DFW

Prosperity Bank

Amegy Bank

Chase Bank-Fort Worth

Chase Bank-Irving

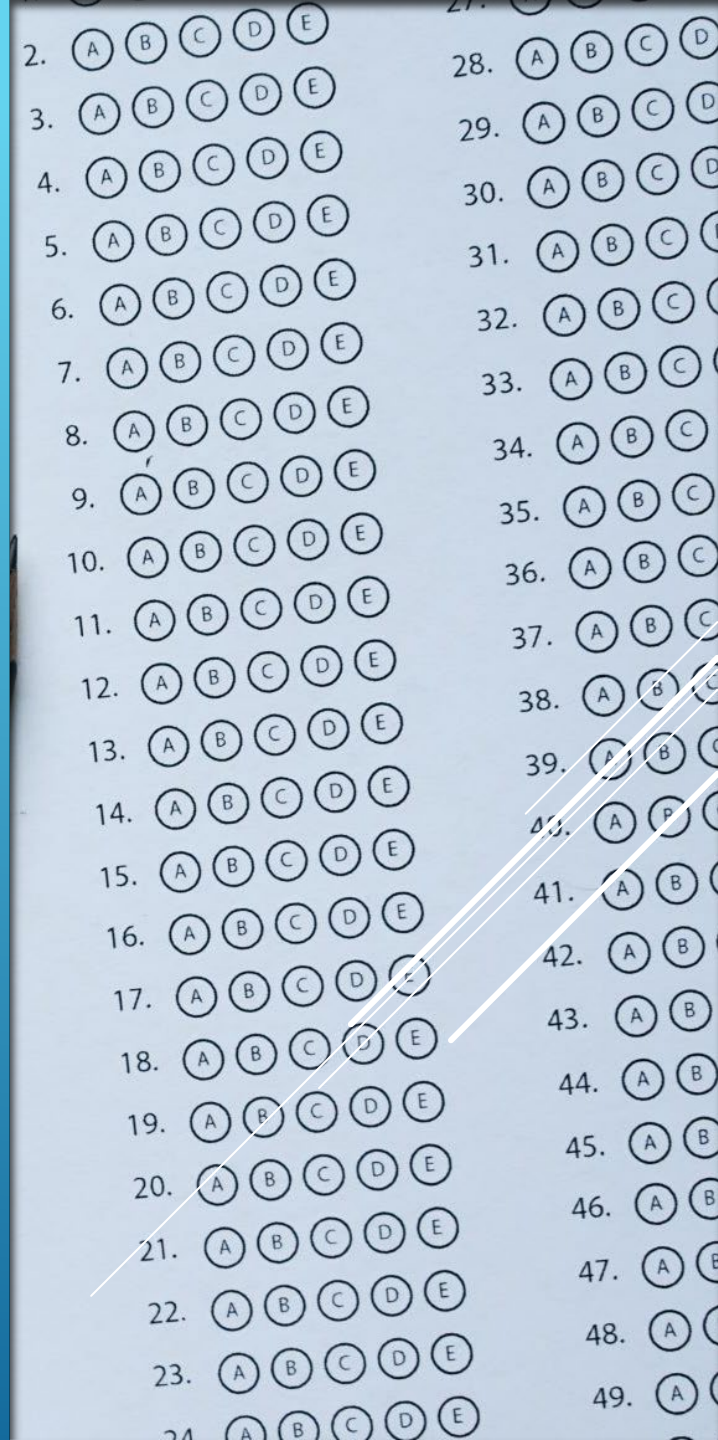
Regions Bank

Frost Bank

African American Entrepreneurs Association

# CHECKLIST

- ▶ FOR A COMPLETE LIST OF REQUIRED DOCUMENTS – GO TO <https://nctrca.mwdbe.com> or [www.nctrca.org](http://www.nctrca.org) review the checklists for each application type: ACDBE/DBE or M/S/WBE.



# CONTACTING THE NCTRCA



2261  
BROOKHOLLOW  
PLAZA DR. SUITE 300,  
ARLINGTON, TX  
76006; 817-640-0606



APPLY ONLINE:  
[HTTPS://NCTRCA.MWDBE.COM](https://nctrca.mwdb.com)



FOR MORE  
INFORMATION:  
[WWW.NCTRCA.ORG](http://www.nctrca.org)



ANY QUESTIONS?



# **SOUTH-POINT CONSTRUCTORS TEAM INTRODUCTION**

---

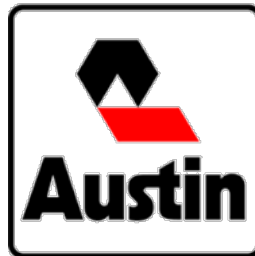


**SOUTH-POINT  
CONSTRUCTORS**

# TEAM INTRODUCTION

**South-Point Constructors is a fully-integrated joint venture between Equity Members Kiewit Infrastructure South Co. and Austin Bridge & Road, LP**

- Multiple local offices, national resources
- Previous Joint Venture experience
- Best practices to optimize DBE participation and success



**SOUTH POINT**  
CONSTRUCTORS

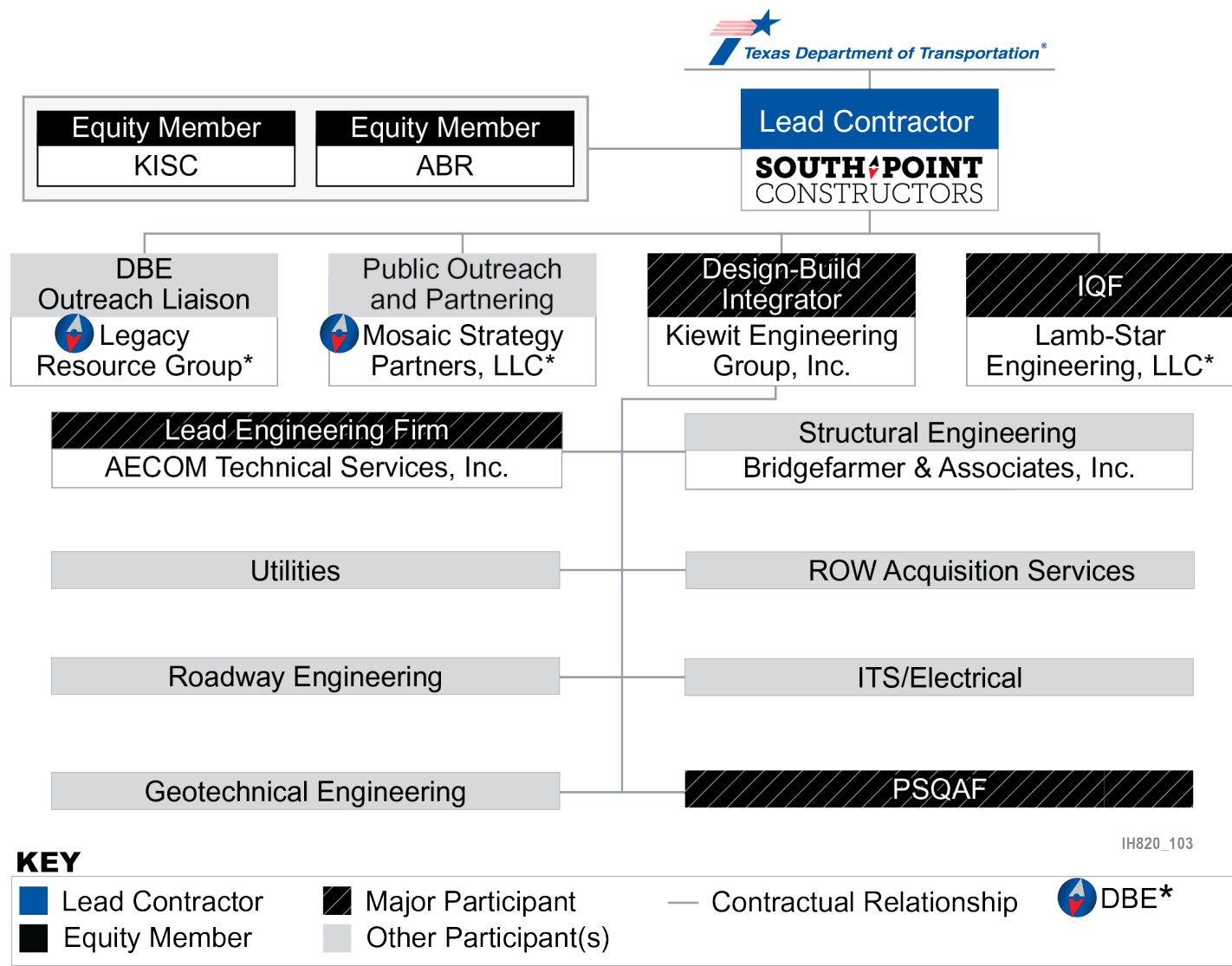
**140** Years of DFW Construction Experience & Partnerships

**15** Years of Design-Build Experience in Texas

**\$2.8B** TxDOT Design-Build Contracts Delivered

**\$44M** Currently Committed to Texas DBE firms

# SOUTH-POINT CONSTRUCTORS CURRENT TEAM STRUCTURE



IH820\_103

# DESIGN/PROFESSIONAL SERVICES SUBCONSULTANTS

Subcontractor Name	Contract Scope
<b>Corsair Consulting LLC (DBE)</b>	Geotechnical Design
CSJ Engineering Associates, LLC	Utility Design
Dan Brown & Associates	Geotechnical Design
<b>EJES, Inc. (DBE)</b>	Noise Wall Design
EMC, Inc.	Utility Design
<b>Enco Associates, Inc. (DBE)</b>	Telecommunication Design
Energy Construction Solutions, Inc.	S.U.E,
<b>GRAM Traffic of North Texas, Inc. (DBE)</b>	Traffic Data
<b>IEA, Inc. (DBE)</b>	Traffic Control Design
Jason Crawley	Publishing Services
<b>VRX, Inc. (DBE)</b>	Structural Services
<b>Lamb-Star Engineering (DBE)</b>	PSQAF
<b>Maldonado-Burkett, LLP (DBE)</b>	Electrical/ITS Design

Subcontractor Name	Contract Scope
<b>Maestas &amp; Associates, LLC (DBE)</b>	Roadway Design
<b>Mesa Integrated Solutions, Inc. (DBE)</b>	3D Modeling
<b>Meta Engineering, LLC (DBE)</b>	Traffic Control Design
<b>Mosaic Strategy Partners, LLC (DBE)</b>	Public Outreach and Partnering
<b>Native Strategies, LLC (DBE)</b>	Civil Design
<b>Rios Engineering, LLC (DBE)</b>	Roadway Design
<b>Solaray Engineering, Inc. (DBE)</b>	Engineering Services
<b>Survwest, LLC (DBE)</b>	Geotechnical Design
<b>TJ Hunter Engineering, Inc. (DBE)</b>	Traffic Control Design
<b>VRX, Inc. (DBE)</b>	Environmental Review Structural Services



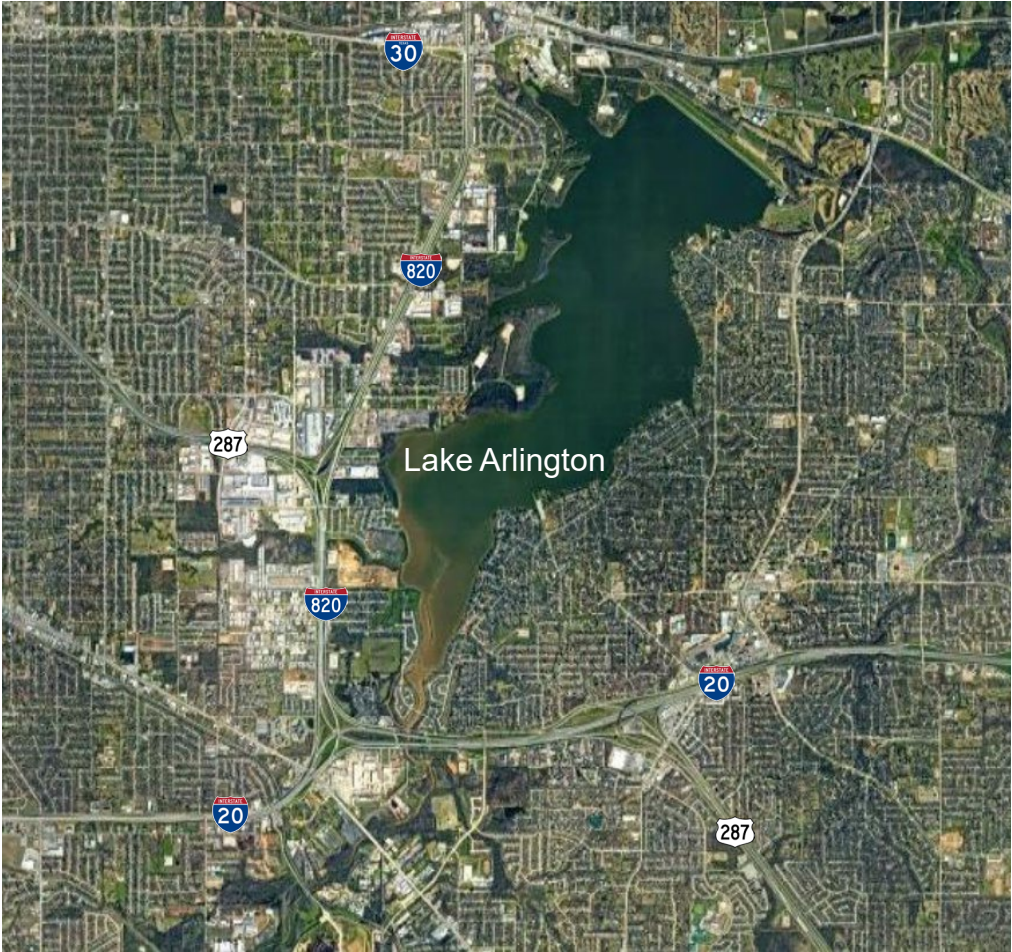
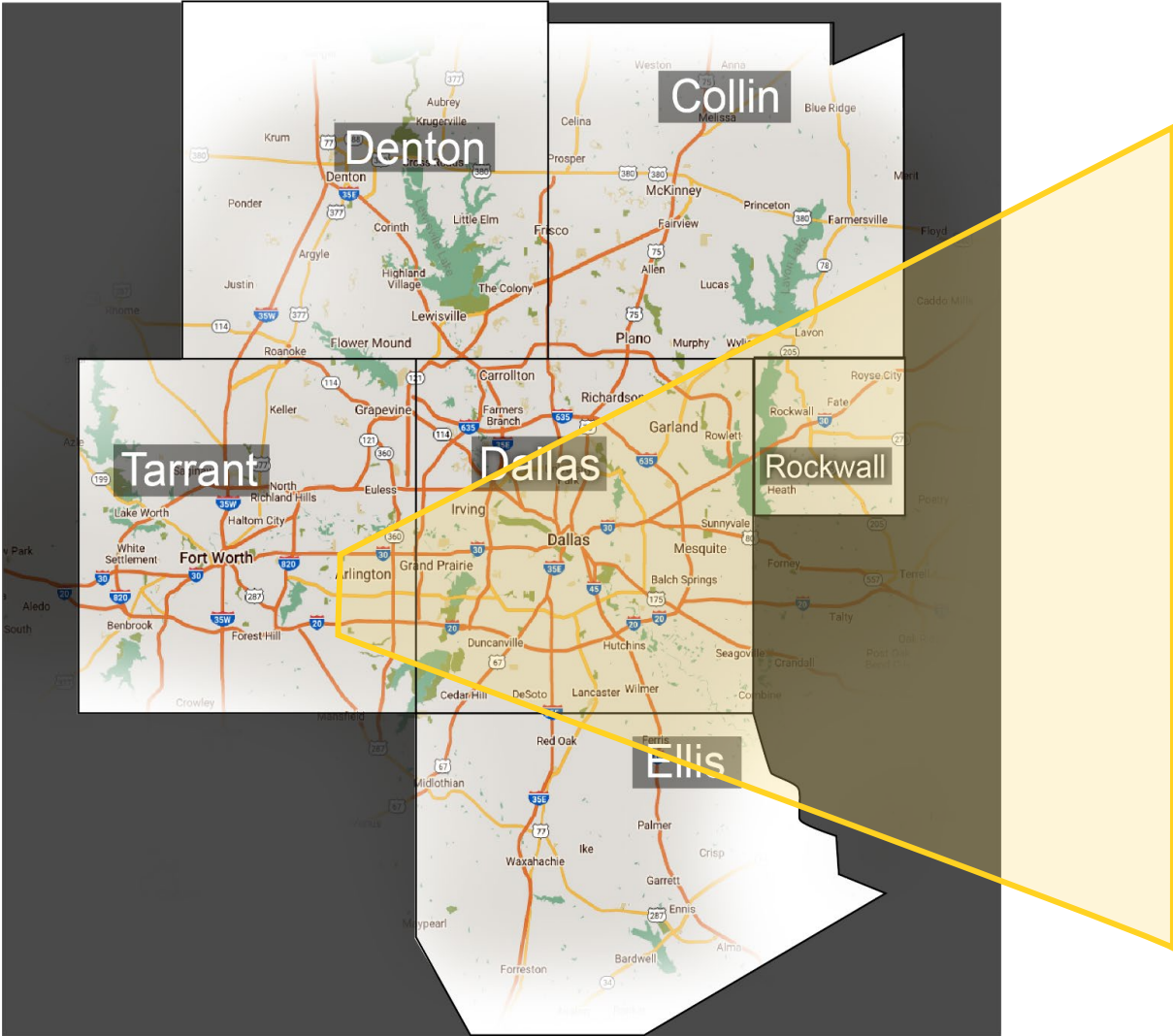
# **SOUTHEAST CONNECTOR PROJECT OVERVIEW**

---

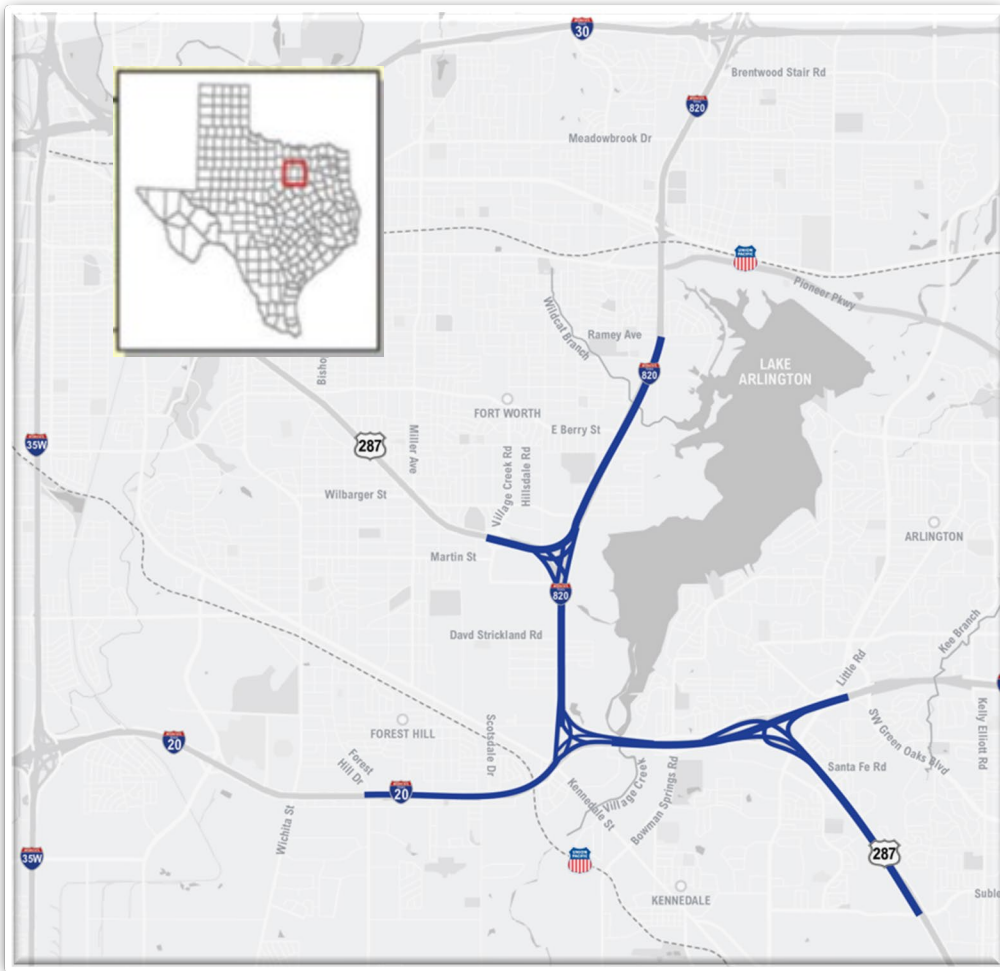


**SOUTHPOINT**  
CONSTRUCTORS

# PROJECT OVERVIEW



# PROJECT OVERVIEW: SOUTHEAST CONNECTOR



- **Project Location: Tarrant County**
  - I-20, I-820 and US 287
  - Cities of Arlington, Forest Hill, Fort Worth, Kennedale
- **Total Project Length: 11.1 miles**
  - Reconstruction of I-20/I-820, I-20/US 287 and I-820/US 287 interchanges
  - Two of the 100 most congested roadways in Texas connect to the project corridor

# PROJECT OVERVIEW: SOUTHEAST CONNECTOR

The Southeast Connector project is a design-build project in the Fort Worth District consisting of approximately 11.1 miles of improvements to I-20 from Forest Hill Drive to Park Springs Boulevard, to I-820 from I-20 to Ramey Avenue, and to US 287 from Village Creek Road to Sublett Road. The project components include the design, construction and maintenance of the roadways, which includes the following:

- **I-20 from Forest Hill Drive to Little Road:** Construction of one additional mainlane, plus four-lane collector-distributors, in each direction; the reconstruction and realignment of existing mainlanes, frontage roads, US 287/I-20 interchange, and entrance and exit ramps.
- **I-820 from I-20 to Ramey Avenue:** Construction of two additional mainlanes, plus one additional frontage road lane, in each direction; the reconstruction and realignment of existing mainlanes, frontage roads, I-20/I-820 interchange, SP 303/I-820 interchange, US 180/I-820 interchange, and entrance and exit ramps.
- **US 287 from Village Creek Road to Sublett Road:** construction of one additional mainlane in each direction; the reconstruction and realignment of existing mainlanes, frontage roads, US 287/I-820 interchange, and entrance and exit ramps.

# PROJECT SCOPE

Expected improvements upon Southeast Connector Project completion

---

- **The project will rebuild and widen approximately 11 miles of I-20 and I-820**
  - Widen I-20 to 10 mainlanes from I-820 to US 287
  - Widen I-820 to 8 mainlanes from I-20 to Ramey Avenue
- **One lane added in each direction on I-20, I-820 and US 287**
- **Reconstruct the I-20, I-820 and US 287 interchanges**
- **Collector distributor roadways will be constructed to decongest US 287 connections**
  - All left exit and entrance ramps will be eliminated
- **Texas Turnarounds will be added at all cross streets to improve frontage road connectivity and improve access to ramps**
- **Relieve congestion**
  - Increases safety
  - Improves efficiency for the Metroplex

# PROJECT SCOPE

## INTERCHANGE IMPROVEMENTS

---

### I-820, US 287 & I-20

- Left exit to Mansfield is eliminated
- Left exit from EB I-20 to NB I-820 is eliminated

### I-820 & US 287

- Added collector distributor systems to connect US 287 to I-20 and I-820 without merging
- Left exit from US 287 to NB I-820 is eliminated

### US 287 & I-20

- Added collector distributor systems to connect US 287 to I-20 and I-820 without merging

# PROJECT OVERVIEW: OBJECTIVES

---

- Improve Safety
- Alleviate Congestion
- Improve Operations
- Provide Transportation Options
- Delivery Quality Project on Budget and Time

# PROJECT QUANTITIES

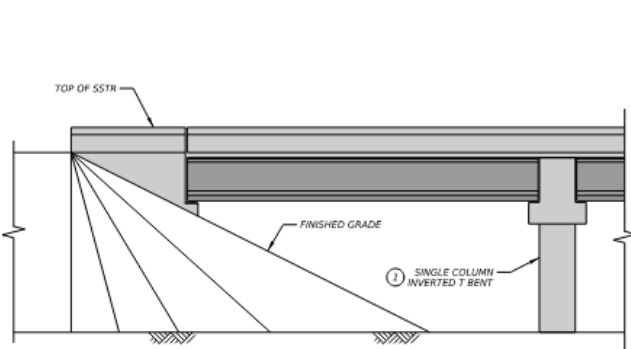
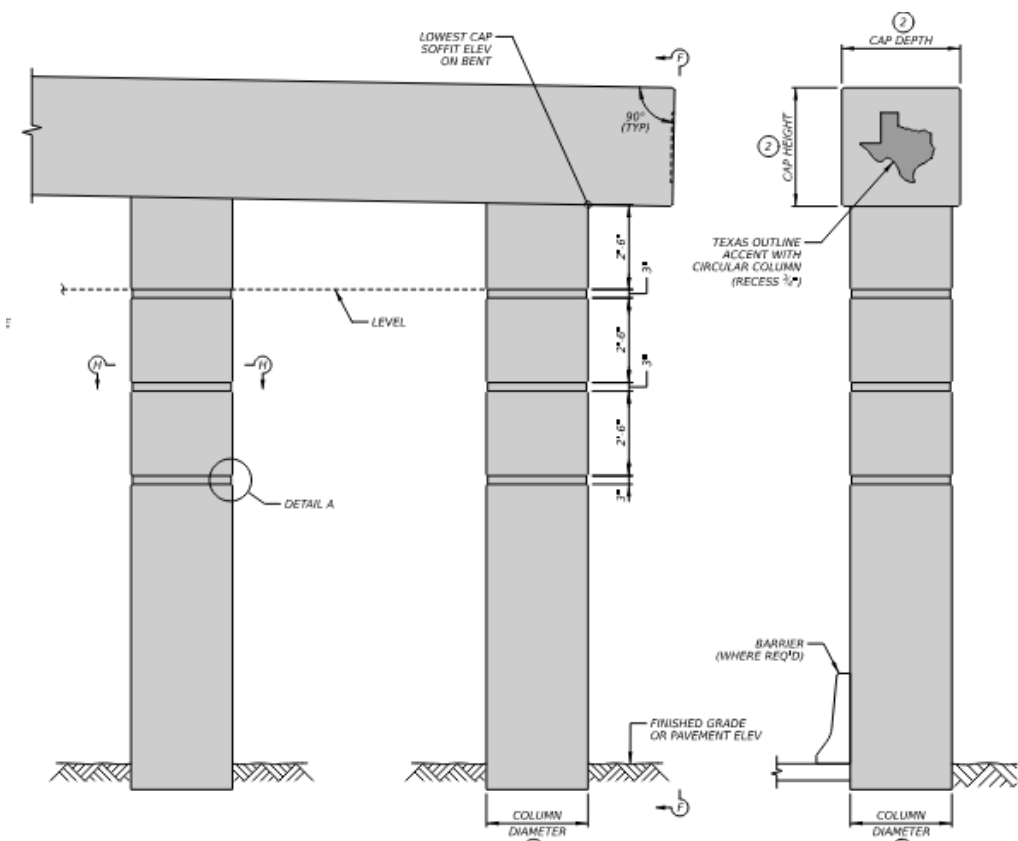
BASIC SCOPE QUANTITIES	
Total Project Lane Miles	246 Lane Miles
Bridge Deck	2,300,000 Square Feet
Concrete Paving	1,780,000 Square Yards
CIP Barrier	430,000 Lineal Feet
Sidewalk/SUP	110,000 Square Yards
Permanent Wall	900,000 Square Feet
Rebar	45,000 Tons
Relocated Utilities	261 Different Facilities



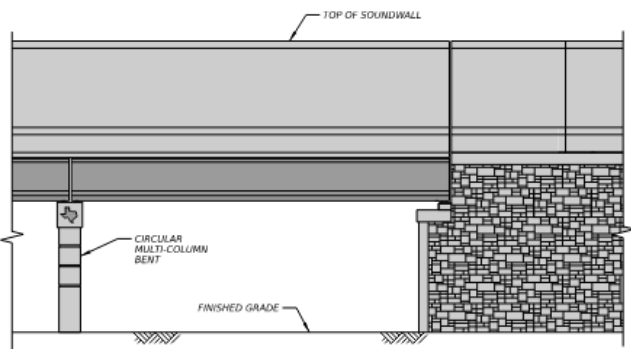
# PROJECT QUANTITIES

## Additional Bridge Information

Number of Individual Bridges: 49



BASELINE AESTHETIC SCHEME  
SHOWING EMBANKMENT AT ABUTMENT  
RAMP OR DIRECT CONNECTOR BRIDGE



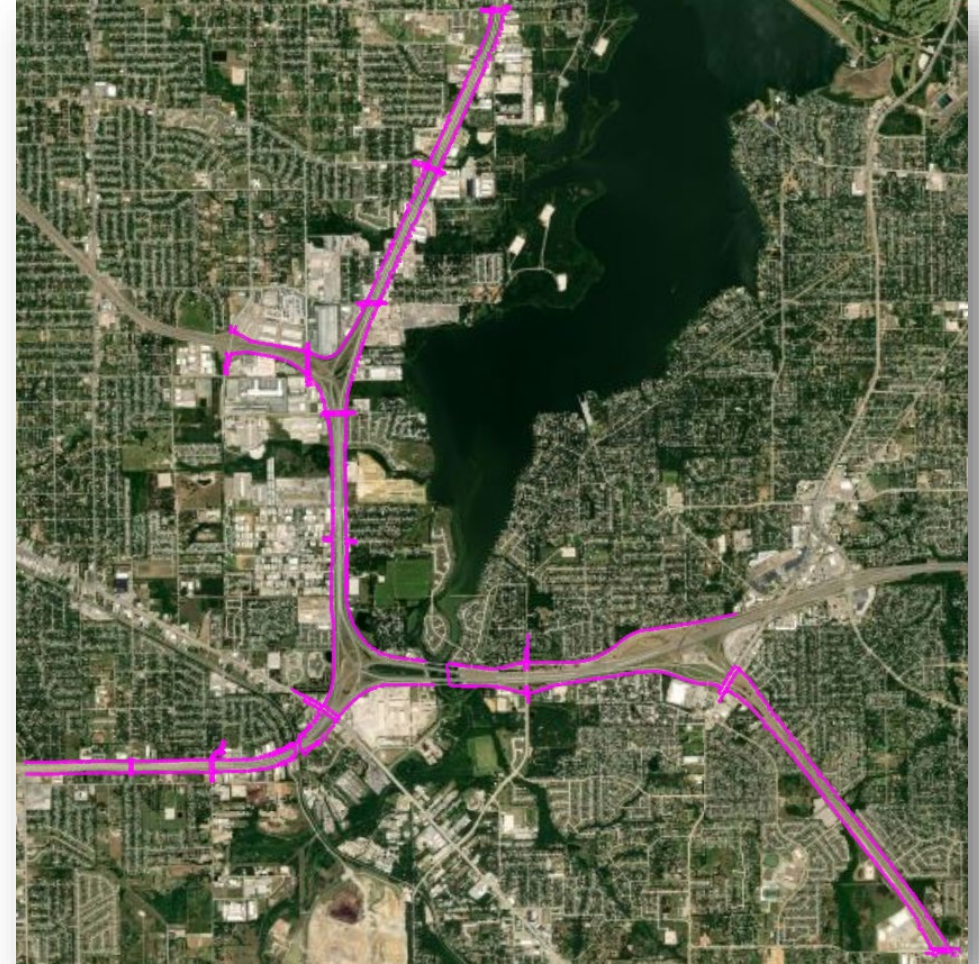
ACCENT AESTHETIC SCHEME  
SHOWING RETAINING WALL AT ABUTMENT  
OVERPASS OR UNDERPASS BRIDGE WITH SOUNDWALL

# PROJECT QUANTITIES

## Additional Sidewalk Information

**Sidewalk/Shared Use Path (SUP) is to be constructed along all frontage roads/cross streets providing pedestrian access for the entire corridor**

- 7,000 SY of current sidewalk throughout the project corridor
  - 110,000 SY new of Sidewalk/SUP

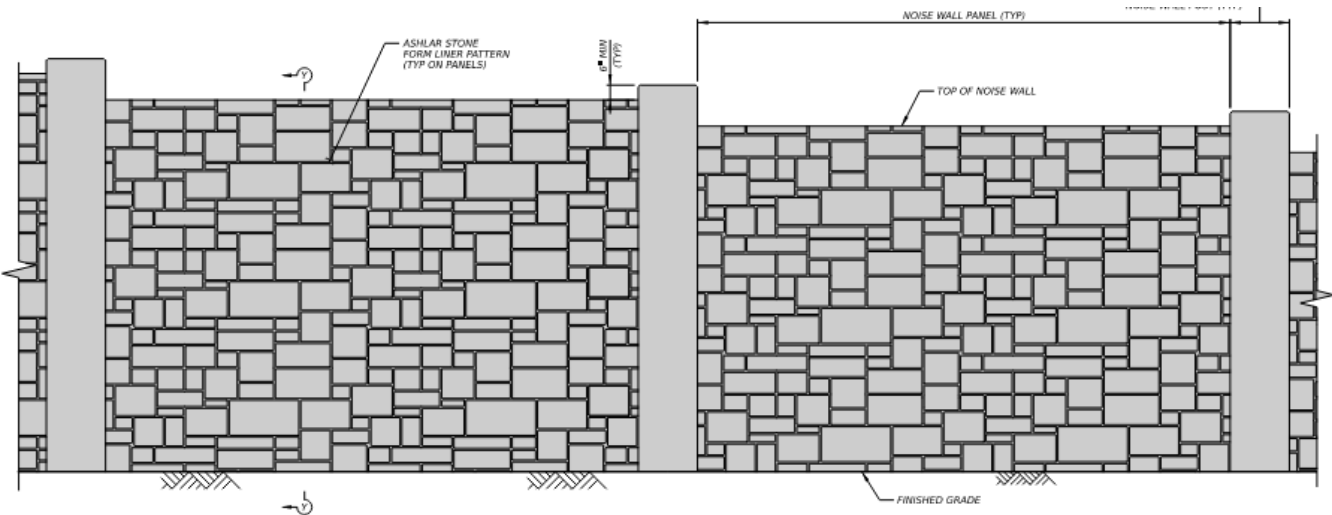


Proposed sidewalk/SUP construction

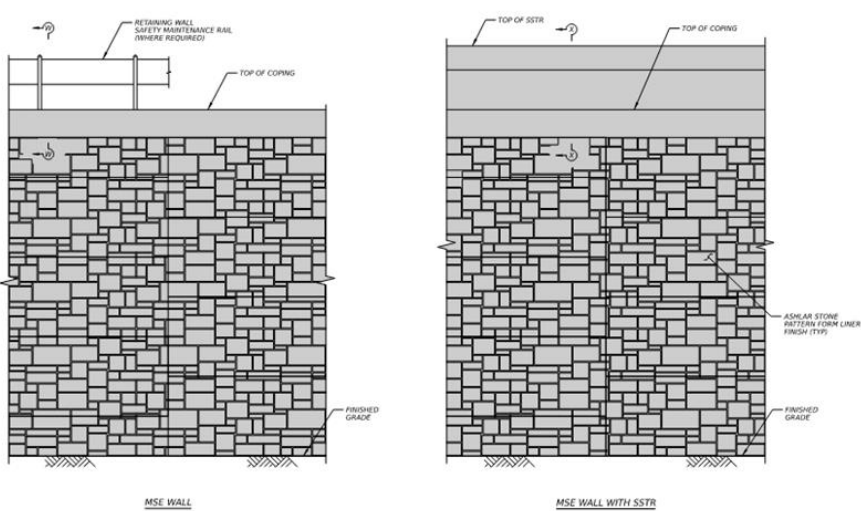
# PROJECT QUANTITIES

## Additional Wall Information

Wall Type	Amount (EA)	Total (SF)
Sound Walls	46 EA	267,000 SF
MSE Walls	58 EA	678,000 SF
Soil Nail Fascia Walls	17 EA	219,000 SF

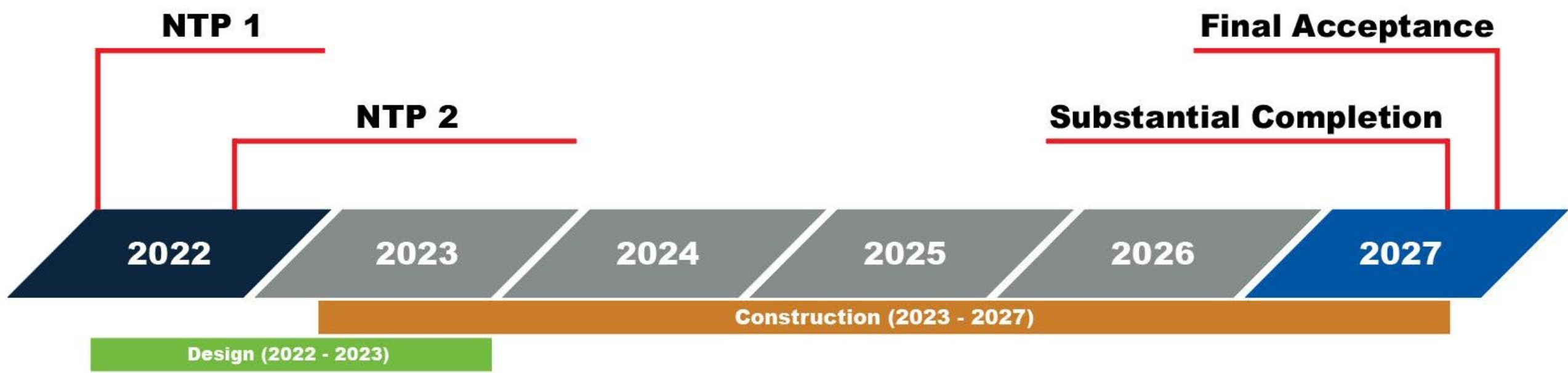


Sound Wall



MSE Wall

# PROJECT TIMELINE



# PROJECT OVERVIEW: PRIME CONTRACT

---

- **Contracting Method:** Design-Build Contract (DBC)
- **Project Cost:** Estimated DBC cost of \$1.59 billion
- **Schedule Milestones**
  - Prime Contract NTP 1: March 2022
  - Professional Services Completion: March 2024
  - Project Physical Completion (Final Acceptance): Q4 2027
- **Disadvantaged Business Enterprise (DBE) Goals:**
  - 14.5% for construction
  - 23.0% for professional services

# PROJECT OVERVIEW: DBE GOALS

---

Firms must be certified as Disadvantaged Business Enterprises (DBEs) by Texas Unified Certification Program (TUCP) to count toward the participation goals set forth by TxDOT.

Six certifying entities:

- City of Austin
- City of Houston
- Corpus Christi Regional Transportation Authority (CCRTA)
- North Central Texas Regional Certification Authority (NCTRCA)
- South Central Texas Regional Certification Authority (SCTRCA)
- Texas Department of Transportation (TxDOT)

***For information about the DBE certification process, visit:  
<https://www.txdot.gov/inside-txdot/division/civil-rights/tucp.html>***

**Disadvantaged  
Business  
Enterprise (DBE)  
Goals:  
14.5% for  
construction  
23.0% for  
professional  
services**



# **SOUTHEAST CONNECTOR OPPORTUNITIES OVERVIEW**

---



**SOUTHPOINT**  
CONSTRUCTORS

# CONSTRUCTION PROCUREMENT SCHEDULE: MATERIALS\*

DESCRIPTION	BID SOLICITATION DATE
Project Limit Signs	September 2022
Concrete Admixtures	
Bedding	October 2022
Dewatering Sub	
Drain Materials	
Precast FTW Structures Material	
RCP Materials/Precast Box Culverts	
Shoring Acc	
Water Materials	
Bridge Expansion Joint Materials	
SIP Metal Decking Materials	
Ready Mix	

*\*All dates subject to change.*

Visit [www.southpointconstructors.com](http://www.southpointconstructors.com) for updates.

# CONSTRUCTION PROCUREMENT SCHEDULE: MATERIALS\*

DESCRIPTION	BID SOLICITATION DATE
Base Supplier (Agg)	November 2022
Geotextile Materials	
Grading - Lime Materials	
SIP Precast Deck Panels Materials	
Rebar Accessory	
Reinforcing Materials (GRP) + Rebar Tie	
Barrier Rail (C221 Railing)	December 2022
Flyash	
Bridge Rehab	
Cement	
Testing Equipment (Agg and Paving)	
Attenuators (PM Only)	
Reinforcing - Wire Mesh	January 2023

*\*All dates subject to change.*

Visit [www.southpointconstructors.com](http://www.southpointconstructors.com) for updates.

# CONSTRUCTION PROCUREMENT SCHEDULE: SUBCONTRACT OPPORTUNITIES\*

DESCRIPTION	BID SOLICITATION DATE
Emergency Utility Repair	September 2022
Blue Rooms (POP)	
Dumpsters	
Water Line Relocation	
Medical Services	
Quality Control	
Walls - Soil Nail Sub	
Temp Wire Wall Materials	October 2022
Drainage Sub	
Recycling (Steel Scrap)	
Welder	
Sound Wall Install & Materials	
Trucking- Flat bed/Dirt Haul	
Potholing	
Sewer Line Relocation	

*\*All dates subject to change.*

Visit [www.southpointconstructors.com](http://www.southpointconstructors.com) for updates.

# CONSTRUCTION PROCUREMENT SCHEDULE: SUBCONTRACT OPPORTUNITIES\*

DESCRIPTION	BID SOLICITATION DATE
Asphalt Milling	November 2022
Demolition Saw Cutting	
Pavement Crushing (Onsite)	
Fence and Railing	
Temp Striping	
Traffic Counting	
CIP Box Culverts	
CIP Inlet Tops	
Concrete - Pumping	December 2022
Agg. Haul	
Asphalt Hot Mix Hauling	
Cement Haul	
Flyash haul	
Concrete Waterproofing	
Demolition- Concrete Pavement	

*\*All dates subject to change.*

Visit [www.southpointconstructors.com](http://www.southpointconstructors.com) for updates.

# CONSTRUCTION PROCUREMENT SCHEDULE: SUBCONTRACT OPPORTUNITIES\*

DESCRIPTION	BID SOLICITATION DATE
Misc. Pavement Subs	December 2022
Natural Sand	
Tack Coat	
Site Security – Guard	
Guardrail (PM + Install) and Attenuators (Install only)	
Electrical Relocation	January 2023
Telecom Relocation	
Deck Drain Materials	
Barrier Cage Reinforcing	
Grooving and Grinding Pavement	
Painting / Coatings / Waterproofing	

*\*All dates subject to change.*

Visit [www.southpointconstructors.com](http://www.southpointconstructors.com) for updates.

# CONSTRUCTION PROCUREMENT SCHEDULE: SUBCONTRACT OPPORTUNITIES\*

---

DESCRIPTION	BID SOLICITATION DATE
Concrete Sidewalk Walls Sub	March 2023
Final Striping	
Flatwork SUB	
Saw and Seal Pavement	
Slip Forming Barrier	
Steel/Rebar	
Wet Haul	

*\*All dates subject to change.*

Visit [www.southpointconstructors.com](http://www.southpointconstructors.com) for updates.

# JOIN OUR DATABASE TO BE NOTIFIED OF OPPORTUNITIES

- ▲ **Step 1:** Complete our [Subcontractor Questionnaire](#) to join our mailing list and help us understand your capabilities and bidding interest for this project.
- ▲ **Step 2:** Sign-up for ***Building Connected*** to be added to our bidder's list!
- Create an account with [BuildingConnected](#)
  - The SPC [BuildingConnected](#) site can be accessed at:  
<https://app.buildingconnected.com/public/5f440af4acbdf9004e4c6b61>

***SPC will utilize [BuildingConnected](#) for bid solicitations and vendor communications regarding plans/specs/addenda distribution.***

The image displays two overlapping screenshots. The top screenshot is a 'Subcontractor Questionnaire' form from South Point Constructors, featuring input fields for First Name, Last Name, Company Name, Email, and Phone Number. The bottom screenshot is a web browser window showing the 'Create Account' page on the BuildingConnected website. The browser's address bar shows the URL 'https://app.buildingconnected.com/create-account'. The page header includes the BuildingConnected logo and 'AN AUTODESK COMPANY'. The main heading is 'Create a BuildingConnected account'. Below this is an email input field with the placeholder 'YourEmail@AnInterestedDBE.com'. A checkbox is checked, indicating agreement to the terms of service and privacy policy. A prominent blue 'CREATE ACCOUNT' button is visible, with a link 'Already have an account?' below it.

# SOLICITATION NOTIFICATION PROCESS

---

SPC will notify firms of open solicitations/opportunities via:

- Direct email (to database)
- TUCP-Certified DBEs via B2gNOW (targeted NAICS codes)
- BuildingConnected
- Project website
- Various local publications
- Distribution to Community Partners

An aerial photograph of a complex highway interchange under construction. The image features multiple levels of elevated roadways with several lanes. Construction equipment and vehicles are visible on the roads. A semi-transparent map overlay is visible on the left side of the image. The text "SOUTHEAST CONNECTOR" and "WORKING WITH SPC" is overlaid in white, bold, sans-serif font. A horizontal white line is positioned below the text.

# **SOUTHEAST CONNECTOR WORKING WITH SPC**



**SOUTH POINT**  
CONSTRUCTORS

# ARE BIDDERS REQUIRED TO PRE-QUALIFY?

SPC does not have a formal pre-qualification process - ALL firms are welcome to respond to our quals/bid solicitations without prequalifying.

- Professional services/design selections are qualifications based
- Construction scopes are competitive bid

## We recommend:

- ✓ Completing our subcontractor questionnaire to tell us about services provided, items interested in bidding, and prior experience
- ✓ Watching for email and B2gNOW notifications about bid opportunities
- ✓ Signing up for BuildingConnected
- ✓ Visiting our website for updates about opportunities and events

Specific requirements may vary, based on scope and package size, but general factors considered for selection may include:

- Safety performance
- Proven quality
- Certification
- Insurance and bonding capability
- Years in business
- Reputation
- Past performance with Project Team Members or Client
- Value-added products or services
- On-time performance

# RESOURCES AND ASSISTANCE

South-Point Constructors is committed to providing information and resources to assist firms seeking opportunities to participate on the Southeast Connector project.

- “Roadside Assistance” Workshop Series – **STAY TUNED FOR SCHEDULE!**
- Bidders’ Quick Reference Guides
- SPC Website

**Missed our past workshops?**  
*Visit our website to access presentation files and recordings of our past events*

The collage displays various resources from the South-Point Constructors website. At the top left is the 'Resources' page with the tagline 'Connected. Committed. Constructors.' Below it are sections for 'COVID-19 Resources and Support' (listing SBDC, Google, SBA, and Small Business Majority) and 'Business Assistance' (listing Dallas/Fort Worth Minority Business Development, SCORE, and Small Business Transportation Resource Center). To the right is the 'BIDDERS QUICK REFERENCE GUIDE – NEXT STEPS AND RESOURCES' which includes a 'JOIN OUR BIDDERS LIST!' section with a numbered step to set up an account, and a 'Contact us for a Subcontractor Pre-bid 1-on-1: We'd like to get to know you!' section. Below the guide is the 'THE ROADSIDE ASSISTANCE WORKSHOP SERIES' announcement, detailing the partnership between Kleinfelder Infrastructure South Co. and Austin Bridge & Road L.P., and listing four upcoming workshops: DBE Certification, BuildingConnected Bidding Platform, Design Build Delivery Method Overview, and Safety/Operating in a Covid-19 Environment. At the bottom right is a 'WE'RE BUILDING MORE THAN ROADS' section highlighting community support and subcontractor opportunities.

# CONNECT WITH SOUTH-POINT

---



**EMAIL**

**Outreach@SouthPointConstructors.com**



**VISIT**

**SouthPointConstructors.com**

- **Information and Resources**
- **Project Leadership Team**
- **Certification**
- **Civil/Grading**
- **Drainage**
- **MOT**
- **Paving**
- **Structures**
- **Other: Safety/Quality/  
Environmental**

# **STATIONS & NETWORKING**

---

# SPECIAL THANKS!

---



Mr. Sherman Powers  
Executive Director  
North Central Texas Regional Certification Agency (NCTRCA)

## CONTACT:

**Web:** <https://nctrca.org/>

**Phone:** (817) 640-0606 (Office)

**Email:** [mail@nctrca.org](mailto:mail@nctrca.org)

AIM YOUR SMART PHONE  
**CAMERA HERE**  
TO ADD US TO YOUR  
CONTACTS.



**PLEASE JOIN US**  
for future **outreach events** in 2022

**THANK YOU!**



**SOUTHPOINT**  
CONSTRUCTORS