

South-Point Constructors

BRIDGE DEMOLITION & SITE PREPARATION SERVICES SCOPE INFORMATION SESSION

IH820 – SOUTHEAST CONNECTOR PROJECT

July 25, 2022, 11:00a.m. CDT

The presentation will begin shortly.

**Please “sign in” by typing your name and company
in the Q&A panel at the right side of the screen.**

South-Point Constructors

BRIDGE DEMOLITION & SITE PREPARATION SERVICES SCOPE INFORMATION SESSION

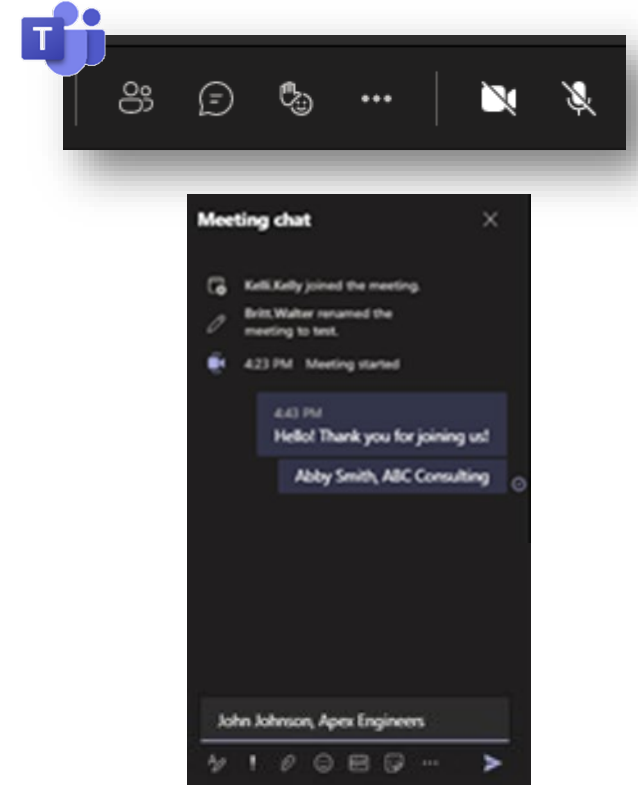
IH820 – SOUTHEAST CONNECTOR PROJECT

July 25, 2022, 11:00a.m. CDT

This session is being recorded.

MICROSOFT TEAMS – QUICK TIPS

- To avoid background noise during the presentation, please mute your microphone.
- Please sign in by typing your name and firm in the chat box.
- All attendees are invited to submit questions via the chat function during the presentation.
- If you experience technical difficulties, please exit meeting and reenter.
- A copy of this presentation will be available following the meeting.



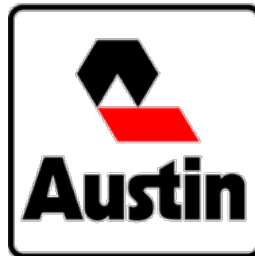
AGENDA

- Welcome
- South-Point Constructors Team Introduction
- Southeast Connector Project Overview
- Bridge Demolition Scope Overview
- Site Preparation Services Scope Overview
- Upcoming Opportunities
- Future Opportunities
- Working with South-Point Constructors
 - Get Connected
 - Resources and Assistance
- Q&A

TEAM INTRODUCTION

South-Point Constructors is a fully-integrated joint venture between Equity Members Kiewit Infrastructure South Co. and Austin Bridge & Road, LP

- Multiple local offices, national resources
- Previous Joint Venture experience
- Best practices to optimize DBE participation and success



SOUTH-POINT
CONSTRUCTORS

140

Years of DFW Construction
Experience & Partnerships

15

Years of Design-Build
Experience in Texas

\$2.8B

TxDOT Design-Build
Contracts Delivered

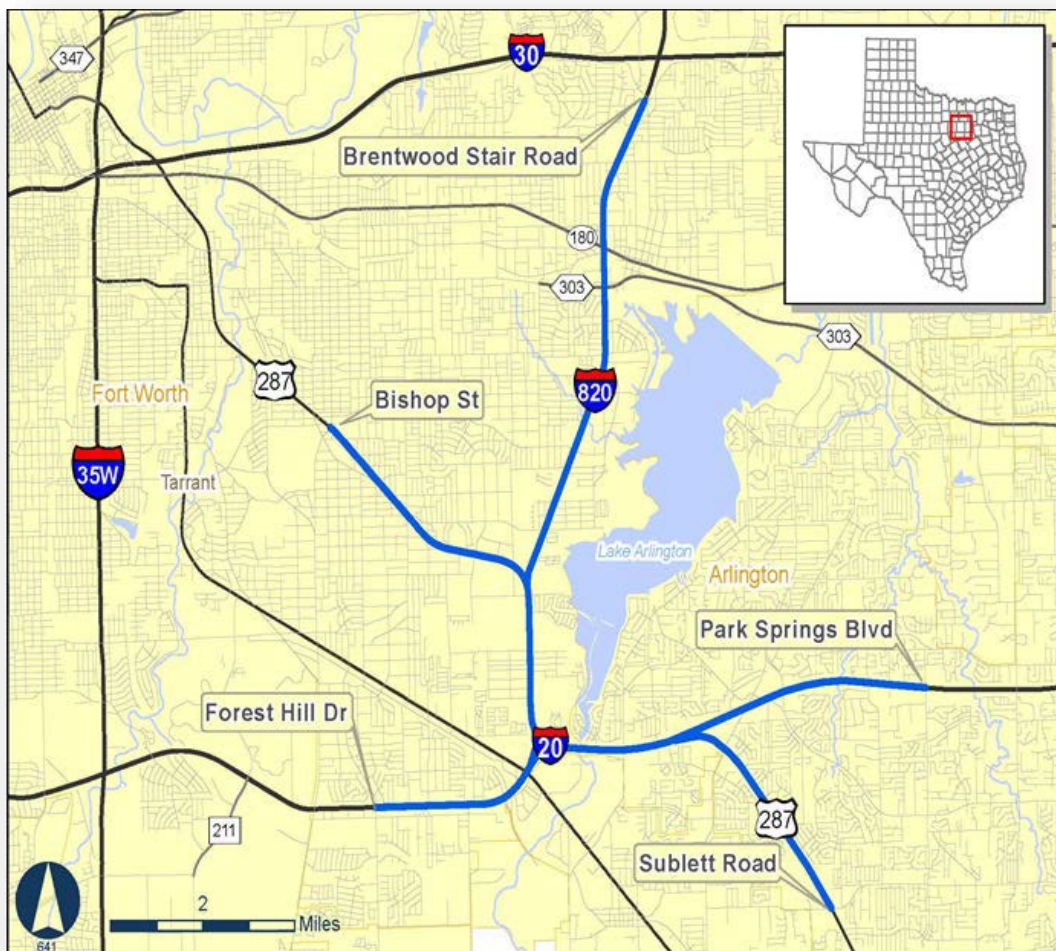


SOUTHEAST CONNECTOR DESIGN-BUILD PROJECT OVERVIEW



SOUTHPOINT
CONSTRUCTORS

PROJECT OVERVIEW: SOUTHEAST CONNECTOR



- **Project Location: Tarrant County**
 - I-20, I-820 and US 287
 - Cities of Arlington, Forest Hill, Fort Worth, Kennedale and Mansfield
- **Total Project Length: 16.6 miles**
 - Reconstruction of I-20/I-820, I-20/US 287 and I-820/US 287 interchanges
 - Two of the 100 most congested roadways in Texas connect to the Project corridor



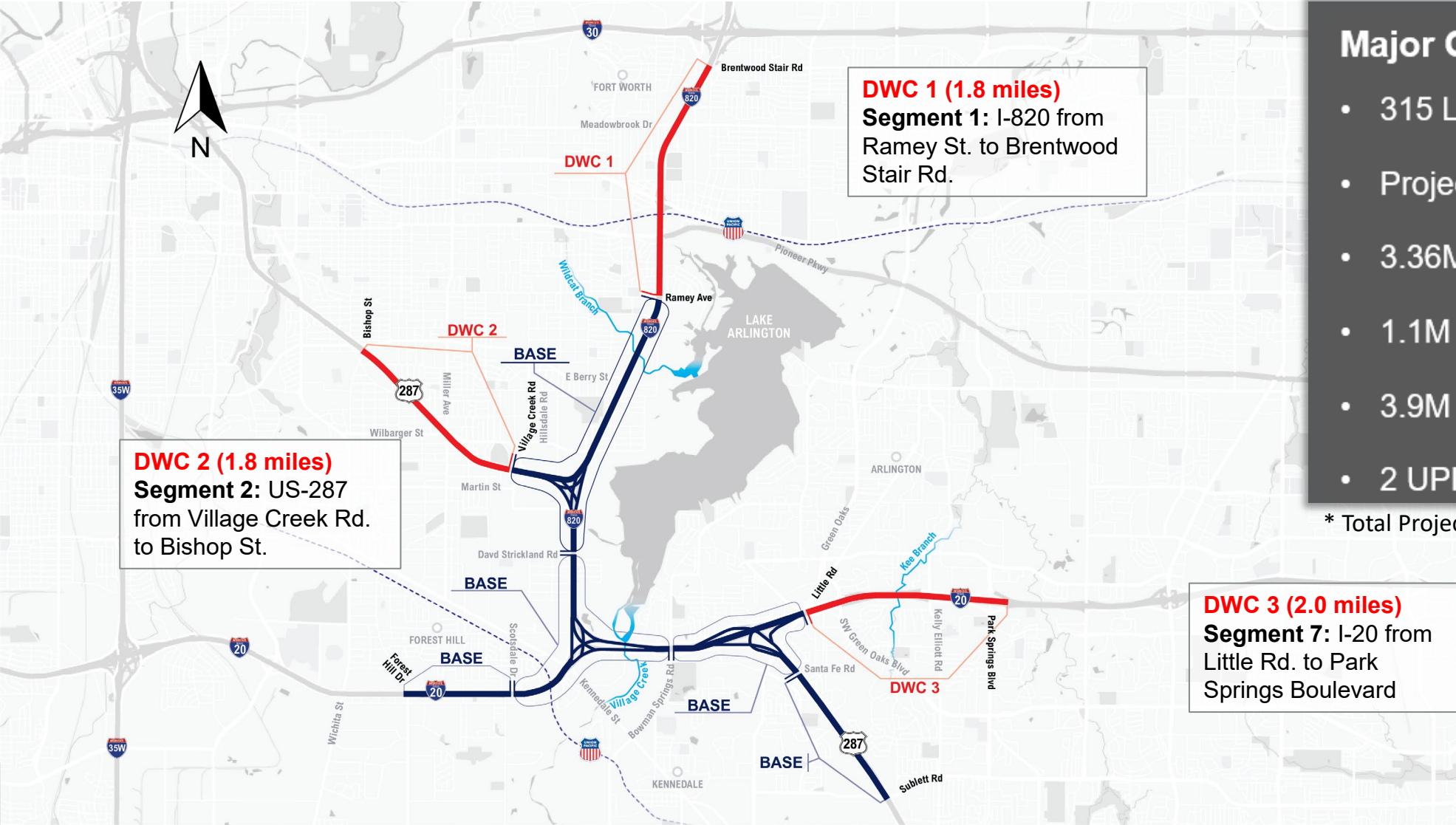
PROJECT OVERVIEW: SOUTHEAST CONNECTOR



The Southeast Connector is a design-build Project in the Fort Worth District consisting of approximately 16.6 miles of non-tolled improvements to I-20 from Forest Hill Drive to Park Springs Boulevard, to I-820 from I-20 to Brentwood Stair Road, and to US 287 from Bishop Street to Sublett Road. The Project components include the design, construction and maintenance of the roadways, which includes the following:

- **I-20 from Forest Hill Drive to Park Springs Boulevard:** construction of one additional general-purpose lane, plus four-lane collector-distributors, in each direction; the reconstruction and realignment of existing GPLs, frontage roads, US 287/I-20 interchange, and on- and off-ramps.
- **I-820 from I-20 to Brentwood Stair Road:** construction of two additional general-purpose lanes, plus one additional frontage road lane, in each direction; the reconstruction and realignment of existing GPLs, frontage roads, I-20/I-820 interchange, SP 303/I-820 interchange, US 180/I-820 interchange, and on- and off-ramps.
- **US 287 from Bishop Street to Sublett Road:** construction of one additional general-purpose lane in each direction; the reconstruction and realignment of existing general-purpose lanes, frontage roads, US 287/I-820 interchange, and on- and off-ramps.

PROJECT OVERVIEW: SEGMENTS



Major Quantities:

- 315 Lane Miles
- Project Length 17.15 Miles
- 3.36M SF Bridge work
- 1.1M SF of Retaining Walls
- 3.9M CY of Earthwork
- 2 UPRR Crossings

* Total Project (Base + DWC1+DWC2+DWC3)

PROJECT OVERVIEW: PRIME CONTRACT

- **Contracting Method:** Design-Build Contract (DBC)
- **Project Cost:** Estimated DBC cost of \$1.59 billion
- **Schedule Milestones**
 - Prime Contract NTP: Feb 2022
 - Professional Services Completion: March 2024
 - Project Physical Completion (Final Acceptance): Q2 2027
- **Disadvantaged Business Enterprise (DBE) Goals:**
 - 14.5% for construction
 - 23.0% for professional services

PROJECT OVERVIEW: DBE GOALS

Firms must be certified as Disadvantaged Business Enterprises (DBEs) by Texas Unified Certification Program (TUCP) to count toward the participation goals set forth by TxDOT.

Six certifying entities:

- City of Austin
- City of Houston
- Corpus Christi Regional Transportation Authority (CCRTA)
- North Central Texas Regional Certification Authority (NCTRCA)
- South Central Texas Regional Certification Authority (SCTRCA)
- Texas Department of Transportation (TxDOT)

**Disadvantaged
Business Enterprise
(DBE) Goals:**
14.5% for construction
**23.0% for professional
services**

***For information about the DBE certification process, visit:
<https://www.txdot.gov/inside-txdot/division/civil-rights/tucp.html>***



IH820 (SE CONNECTOR) DESIGN-BUILD BRIDGE DEMOLITION SCOPE OVERVIEW



BRIDGE DEMOLITION SCOPE OVERVIEW

Bidder to provide all labor, equipment and supervision for the bridge demolition (Total of 51 bridges)

Subcontractor scope includes:

- Separate mobilization for each bridge
- Rubblizing of all concrete to chunks smaller than 1 foot
- Sorting and loading of all concrete and steel
- Demo all shafts to 2' below grade and cut off rebar flush with concrete
- Clean up roadway before the end of each closure
- Separate, gather, and bundle rebar from demolition and place in SPC provided rebar dumpsters
- Return open ground to original condition after demo is complete



IH820 (SE CONNECTOR) DESIGN-BUILD SITE PREPARATION SERVICES SCOPE OVERVIEW



SITE PREPARATION SERVICES SCOPE OVERVIEW

Site Work for Proposed QC Lab Layout Near Park Springs Boulevard

Subcontractor scope includes:

- All Labor, Equipment, and Supervision for the Lab Site Work
- Fuel and Fuel Surcharges for Subcontractor Equipment
- Dust Control and Water Trucks, Including Supplying Water
- Loading, Trucking, and Disposal Fees for Any Materials
- Portable Site Restrooms
- Traffic Control

SITE PREPARATION SERVICES SCOPE OVERVIEW

No.	Description	Qty	U.O.M.
01	Mobilization/Demobilization	1	EA
02	Silt Fence Install	2,581	LF
03	Clear and Grub	4.5	AC
04	Strip Topsoil (6" Depth)	21,475	SY
05	Subgrade Prep	21,475	SY
06	Place and Finish Agg Base (6" Depth) (Type D)	21,475	SY
07	Install 40' Automated Chain-Link Fence Gate	1	EA
08	Install 11-Gauge 7' Tall Chain-Link Perimeter Fencing	2,581	LF
09	Soil Stabilization (12" Lime @ 3%) For Soil Under Driveway Area, Parking Lot Area, and Lab Area	3244	SY

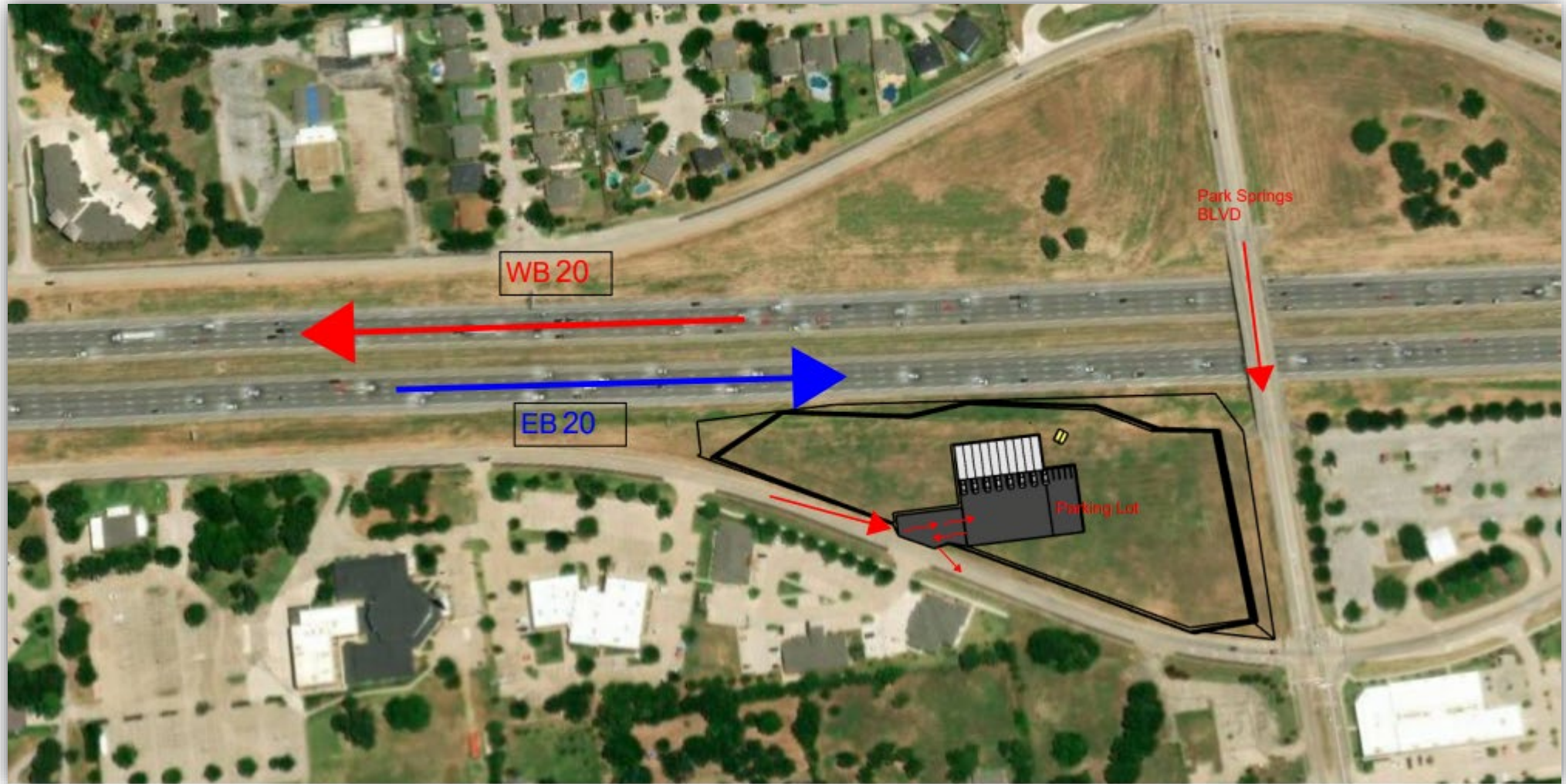
SITE PREPARATION SERVICES SCOPE OVERVIEW



Clarification:

1. The areas marked in the layout as: 150 FT Deceleration Lane, 40 FT Driveway, Parking Lot, and Lab are to show the areas of soil that shall be stabilized with lime (Refer to Line Item 9 of SOW).

SITE PREPARATION SERVICES SCOPE OVERVIEW




SUBMITTAL INSTRUCTIONS

Interested firms should submit bids by July 29, 2022, 5pm CDT.

1. Set up an account in BuildingConnected to access bid package documents.
 - Visit <https://app.buildingconnected.com/createaccount> to set up an account.
2. Click [here](#) to view bid packages and click “Join” button to access scope documents.

Questions? Email: Outreach@SouthPointConstructors.com



IH820 (SE CONNECTOR) DESIGN-BUILD UPCOMING OPPORTUNITIES




SOUTHPOINT
CONSTRUCTORS

ASBESTOS & LEAD ABATEMENT

- Lead and Asbestos Abatement for several bridges
- Schedule needed including Number of Shifts
- Include Proposal for Traffic Control

EROSION CONTROL

- All Typical TxDOT Standard BMPS (Installation and Maintenance)
- Silt Fence, Erosion Control Logs, Rock Filter Dams 1-3, Inlet Protection, Erosion Blanket
- Temporary and Permanent Seeding, Hydromulch and Drill Seeding
- Block and Roll Sodding



IH820 (SE CONNECTOR) DESIGN-BUILD FUTURE OPPORTUNITIES

FUTURE CONSTRUCTION PROCUREMENTS

Fall 2022

- Aggregates and paving
- Aggregates Materials
- Asbestos Abatement
- Asphalt Hot Mix
- Asphalt Hot Mix Hauling
- Asphalt Milling
- Attenuators (PM Only)
- Base Supplier (Agg)
- Bedding
- Bridge demolition
- Bridge Expansion
- Joint Materials
- Cement
- Cement Haul
- Cement/flyash haul
- Concrete - Pumping
- Concrete Admixtures
- Concrete Sidewalk Walls Sub
- Concrete Waterproofing
- Demolition - Concrete Pavement
- Demolition - Saw Cut
- Drain Materials
- Drainage Sub
- Electrical Relocation
- Environmental – Erosion Control (GRP)
- Existing Structures Rehabilitation
- Fence and Railing
- Flatwork SUB
- Flyash
- Foundation Rebar Accessory
- Grading - Geotextile Materials
- Grading - Lime Materials
- Grooving and Grinding Pavement
- Guardrail (PM + Install) and Attenuators (Install only)
- Medical Services
- Misc Pavement Subs
- Painting / Coatings / Waterproofing
- PC FTW Structures Materials

FUTURE CONSTRUCTION PROCUREMENTS (CONT'D)

Fall 2022

- Post Tension Sub
- Potholing
- Project Limit Signs
- PVC / HDPE Materials
- Quality Control
- RCP
- Materials/Precast box Culverts
- Ready Mix
- Recycling (steel scrap)
- Reinforcing - Wire Mesh
- Reinforcing Materials (GRP)
- Reinforcing SUB
- Saw & Seal Pavement
- Sewer line relocation
- SIP Metal Decking Materials
- SIP Precast Deck Panels Materials
- Site Security - Guard
- Slip Forming Barrier
- Sound Wall Materials (GRP)
- Sound Wall Sub
- Tack Coat (Asphalt hot materials)
- Telecom Relocation
- Temp Striping
- Temp Wire Wall Materials
- Testing Equipment (Aggregates and Paving)
- Walls - Temp Soil Nail Sub
- Water line relocation
- Water Materials
- Welder
- Wet Haul
- Grading – Geotextile Materials

Spring 2024

- Final Striping

An aerial photograph of a large-scale highway interchange under construction. The image shows multiple levels of elevated roads with several lanes. Construction equipment and materials are visible on some sections. A semi-transparent map overlay is present on the left side of the image. The background shows a cityscape with various buildings and trees.

IH820 (SE CONNECTOR) DESIGN-BUILD WORKING WITH SPC

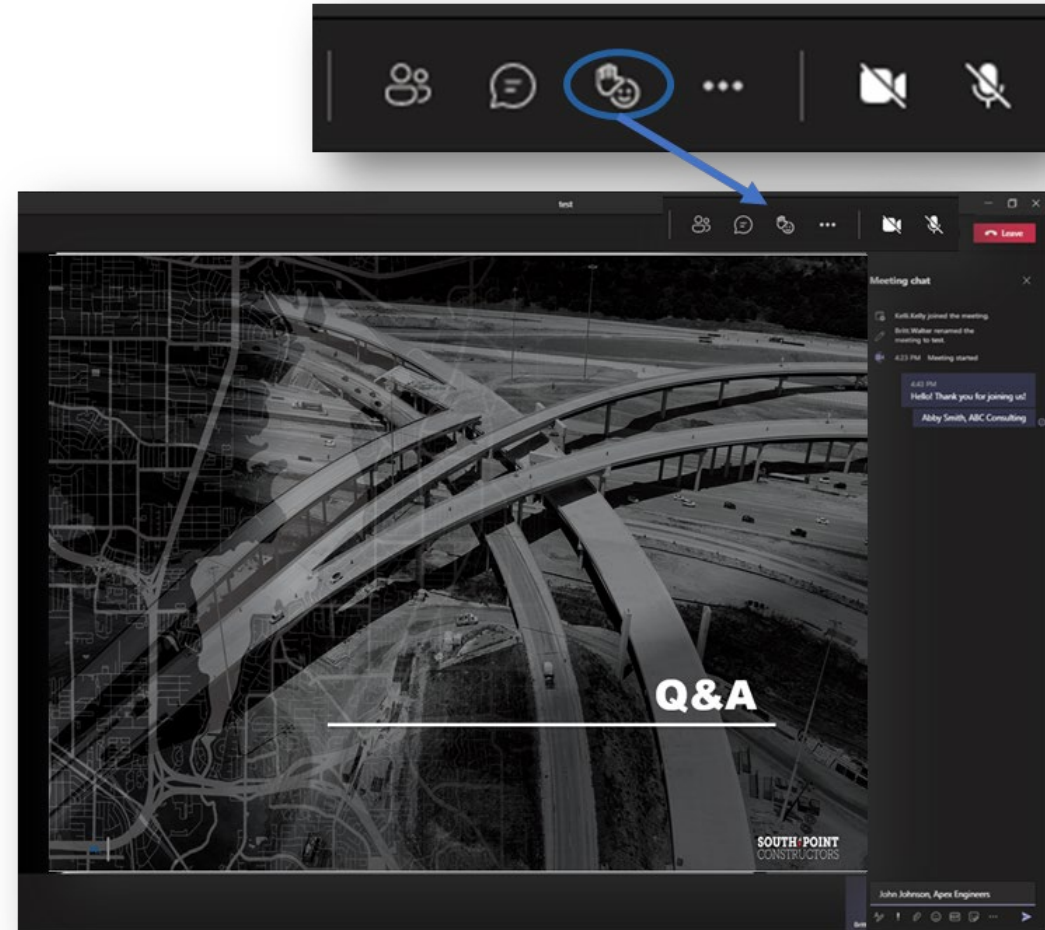


SOUTHPOINT
CONSTRUCTORS

QUESTIONS?

Q&A will begin shortly.

Please type your questions in the Meeting chat panel on the right or click the "raise hand" icon in the Teams toolbar.



MAXIMIZING DBE ENGAGEMENT AND OPPORTUNITIES

- Work packages structured to optimize capacity of larger firms and facilitate participation by small and emerging firms
- Outreach events (general and targeted)
- Promoting connections and relationships between larger firms and DBE firms
- Extensive and timely notification of bid opportunities across a wide variety of channels
- Consistent and transparent bid processes
- Dedicated resources to address identified bid information/assistance needs
- Partnership with local community/industry organizations to promote opportunities and align resources



Name	Bids Due	Published	View
Colorado Springs Airport Runway 17B/35L Rehabilitation	3/27/2020 1:00 PM MST	3/3/2020 10:09 AM MST	View
Chicago, IL	3/27/2020 10:00 AM MST	2/26/2020 12:25 PM MST	View
Apex, NC	3/26/2020 12:00 PM MST	3/2/2020 2:34 PM MST	View
Apex, NC	3/23/2020 10:00 AM MST	3/9/2020 2:57 PM MST	View
Apex, NC	3/16/2020 3:00 PM MST	2/26/2020 10:02 AM MST	View
Chicago, IL	3/16/2020 7:00 AM MST	3/2/2020 3:26 PM MST	View
Chicago, IL	2/19/2020 1:00 PM MST	1/29/2020 12:58 PM MST	View
Apex, NC	2/5/2020 3:30 PM MST	1/21/2020 3:26 PM MST	View
District	1/17/2020 3:00 PM MST	12/30/2019 4:12 PM MST	View
District	1/17/2020 3:00 PM MST	1/2/2020 3:48 PM MST	View
District	1/17/2020 3:00 PM MST	1/6/2020 10:02 AM MST	View
District	1/17/2020 3:00 PM MST	12/26/2019 9:17 AM MST	View

JOIN OUR DATABASE FOR FUTURE OPPORTUNITIES

- **Step 1:** Complete our [Subcontractor Questionnaire](#) to join our mailing list and help us understand capabilities and bidding interest for this project.
- **Step 2:** Create an account with [BuildingConnected](#)
- **Step 3:** Access Bid documents: The SPC BuildingConnected site can be accessed at: <https://app.buildingconnected.com/public/5f440af4acbdf9004e4c6b61>

SPC will utilize BuildingConnected for bid solicitations and vendor communications regarding plans/specs/addenda distribution.

The image displays three overlapping screenshots related to the registration process. The top-left screenshot shows the 'Resources' page of the South Point Constructors website, featuring a map background and the tagline 'Connected. Committed. Constructing.' The top-right screenshot is the 'Subcontractor Questionnaire' form, which includes fields for First Name, Last Name, Company Name, Email, Phone Number, Address, and Website/URL. It also has radio buttons for 'Type of Work' (Professional services, Construction, Vendor/Supplier) and a checkbox for 'Does your company have a current DBE certification from TXDOT?'. The bottom screenshot shows the 'Create Account' page on the BuildingConnected website, with a text input for 'YourEmail@AnInterestedDBE.com', a checked checkbox for 'I agree to the BuildingConnected terms of service and privacy policy', and a prominent 'CREATE ACCOUNT' button. A link for 'Already have an account?' is visible below the button.

South-Point Constructors is committed to providing information and resources to assist firms seeking opportunities to participate on the Southeast Connector project.

- “Roadside Assistance” Workshop Series
- Bidders’ Quick Reference / Resources
- SPC Website

Missed our past workshops?

Visit our website to access presentation files and recordings of our past events:

www.SouthPointConstructors.com

SOUTH-POINT CONSTRUCTORS

Our Team Subcontract Opportunities Work with SPC Resources

Resources

Connected. Committed. Constructors.

COVID-19 Resources and Support

- America's SBDC: COVID-19 Small Business Resources
- Google: Helping your business through COVID-19
- SBA Coronavirus Relief Programs
- Small Business Majority: COVID-19: DAILY UPDATES
- U.S. Chamber of Commerce: Coronavirus Small Business Assistance

Business Assistance

- Dallas/Fort Worth Minority Business Development Corporation
- SCORE Remote Mentoring Program
- Small Business Transportation Resource Center

BIDDERS QUICK REFERENCE GUIDE – NEXT STEPS AND RESOURCES

JOIN OUR BIDDERS LIST!

1 Set up an account in BuildingConnected at: <https://app.buildingconnected.com/create-account>

Contact us for a Subcontractor Pre-bid 1-on-1: We'd like to get to know you!

SOUTH-POINT CONSTRUCTORS is inviting interested bidders to schedule a pre-bid one-on-one meeting. During these 15-minute virtual sessions, members of our team will be available to learn about your company and answer your questions about the project and bidding process.

After signing up for our bidders' list, please email: Outreach@SouthPointConstructors.com to schedule your meeting. To ensure a productive meeting, be sure to come prepared to share your company, along with your

SOUTH-POINT CONSTRUCTORS presents

THE ROADSIDE ASSISTANCE WORKSHOP SERIES

SOUTH-POINT CONSTRUCTORS, a joint venture between Kleinfelder Infrastructure South Co. and Austin Bridge & Road L.P., is assembling a team to respond to the Request for Proposals issued by TxDOT for the delivery of the Southeast Connector Design-Build Project.

SPC has launched a "Roadside Assistance" Workshop Series to provide resources, information, and support to local, small, and diverse businesses seeking opportunities to participate on the Project.

Workshops will be delivered as brief but informative webinars, followed by a question and answer period with our subject matter experts.

A list of workshop dates and topics are below. Please click workshop title to reserve your spot. **REGISTER NOW!**

- FEBRUARY 18, 2021 AT 1 P.M. CST**
Roadside Assistance Workshop: Certification
Interested in learning about the DBE certification process? Join us for an overview of the certification process and benefits of certification presented by the North Central Texas Regional Certification Agency (NCTCA).
- FEBRUARY 25, 2021 AT 11 A.M. CST**
Roadside Assistance Workshop: Navigating BuildingConnected Bidding Platform
New to the BuildingConnected bid platform? Join us for a system demo to learn how to set up an account, access project and bid documents, and submit your bids.
- MARCH 11, 2021 AT 1 P.M. CST**
Roadside Assistance Workshop: Design Build Delivery Method Overview
Join us for an overview of the Design Build delivery method. Learn about contract structure, procurement schedule and process, and key considerations for small firms.
- MARCH 18, 2021 AT 1 P.M. CST**
Roadside Assistance Workshop: Safety/Operating in a Covid-19 Environment
Join us to hear from a safety expert about best practices and resources to keep your workforce safe in the workplace and jobsite.

WE'RE BUILDING MORE THAN ROADS

South-Point Constructors believes in partnering and investing in the local, small, and diverse businesses in the communities where we work and live. We will leverage opportunities for local DBE firms through dividing work into economically feasible packages to assist small and diverse-owned businesses and ensure equitable and meaningful participation. Actively seeking out diverse businesses that will bring additional value to the project. Building upon new and existing subcontractor relationships to grow long-term partnerships. Fostering the development and growth of existing and potential diverse business partners. Partnering with community and industry organizations focused on supporting small and diverse businesses.

*Subcontract opportunities are contingent upon award of the project to SPC.

South-Point Constructors is an Equal Opportunity Employer.

outreach@southpointconstructors.com | www.SouthPointConstructors.com

THE SOUTHEAST CONNECTOR PROJECT

**PLEASE TYPE YOUR QUESTIONS IN THE
MEETING CHAT ON THE RIGHT.**

Q&A

CONNECT WITH SOUTH-POINT



EMAIL

Outreach@SouthPointConstructors.com



VISIT

SouthPointConstructors.com

AIM YOUR SMART PHONE
CAMERA HERE
TO ADD US TO YOUR
CONTACTS.



THANK YOU FOR JOINING US!



SOUTH POINT
CONSTRUCTORS