



South-Point Constructors

ROADSIDE ASSISTANCE WORKSHOP SERIES: **DESIGN-BUILD OVERVIEW**

IH820 – SOUTHEAST CONNECTOR PROJECT

The presentation will begin shortly.

Please be sure to “MUTE” your microphone and “sign in” by typing your name and company in the chat box at the right side of the screen.



South-Point Constructors

ROADSIDE ASSISTANCE WORKSHOP SERIES: DESIGN-BUILD OVERVIEW

IH820 – SOUTHEAST CONNECTOR PROJECT

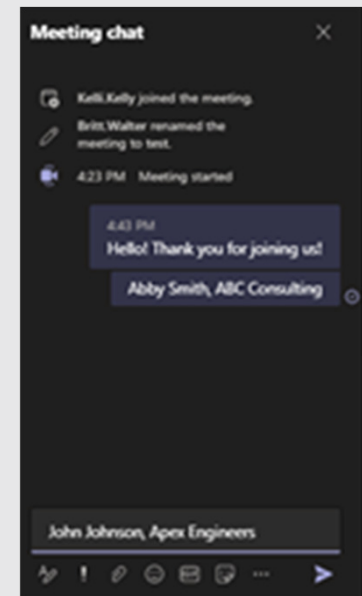
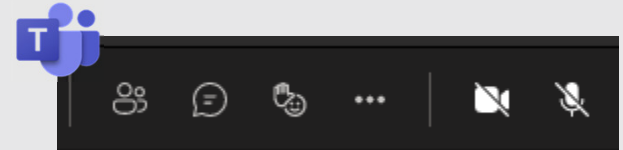
March 11, 2021

This session is being recorded.

"All information provided in South-Point Constructors communications, materials, and events is considered proprietary and is intended for distribution and use exclusively by firms seeking potential contract opportunities with South-Point Constructors in association with the TxDOT Southeast Connector Design Build Project."

MICROSOFT TEAMS – QUICK TIPS

- To avoid background noise during the presentation, please mute your microphone.
- Please sign in by typing your name and firm in the chat box.
- All attendees are invited to submit questions via the chat function during the presentation.
- If you experience technical difficulties, please exit event and reenter.

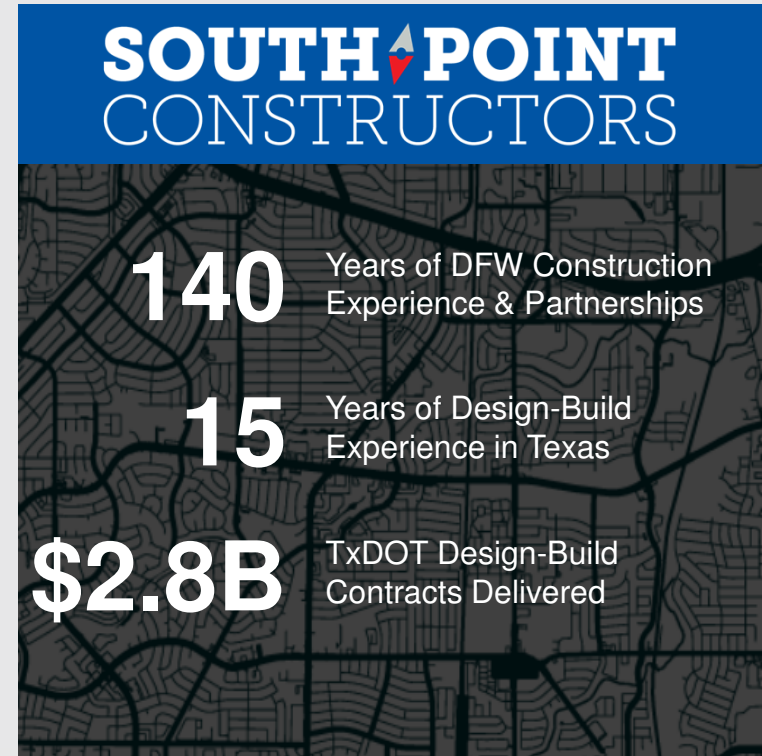


A copy of this presentation will be available following the event.

SOUTH-POINT CONSTRUCTORS INTRODUCTION

South-Point Constructors is a fully-integrated joint venture between Equity Members Kiewit Infrastructure South Co. and Austin Bridge & Road, LP

- Multiple local offices, national resources
- Previous Joint Venture experience
- Best practices to optimize DBE participation and success



PROJECT OVERVIEW: SOUTHEAST CONNECTOR

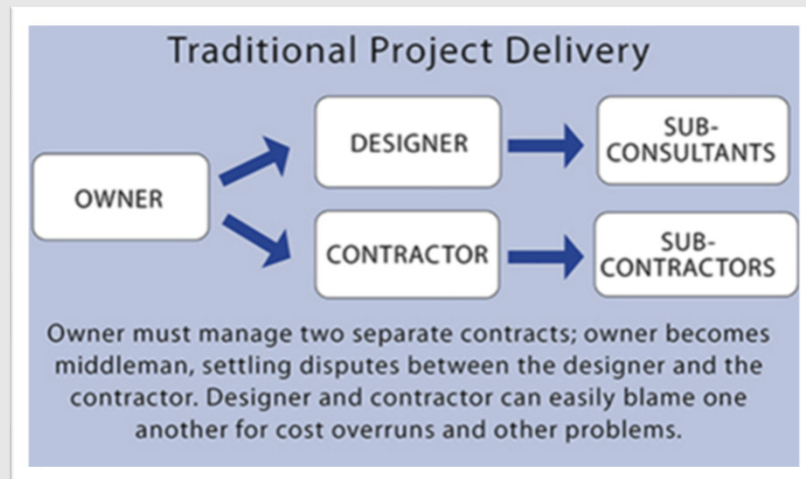
- **Contracting Method:** Design-Build Contract (DBC) with a 15-year Capital Maintenance Contract
 - Three 5-year optional terms
- **Project Cost:** Estimated DBC cost of \$1.59 billion
- **Disadvantaged Business Enterprise (DBE) Goals:**
 - 14.5% for construction
 - 23.0% for professional services

AGENDA

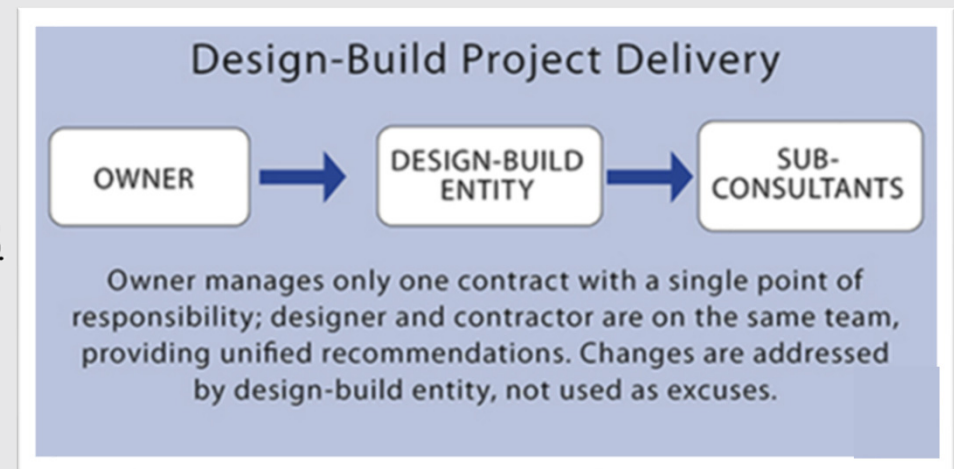
- Design-Build Contracting Model
- Key Differences in Delivery Models
- Benefits of Design-Build
- Expectations on Design-Build Projects
- Lifecycle of a Design-Build Project
 - Estimate, Design, and Construction

DESIGN-BUILD CONTRACTING MODEL

The Client manages only one contract with a single point of responsibility. The designer and contractor work together from the beginning, as a team, leading to collaborative problem-solving and innovation.

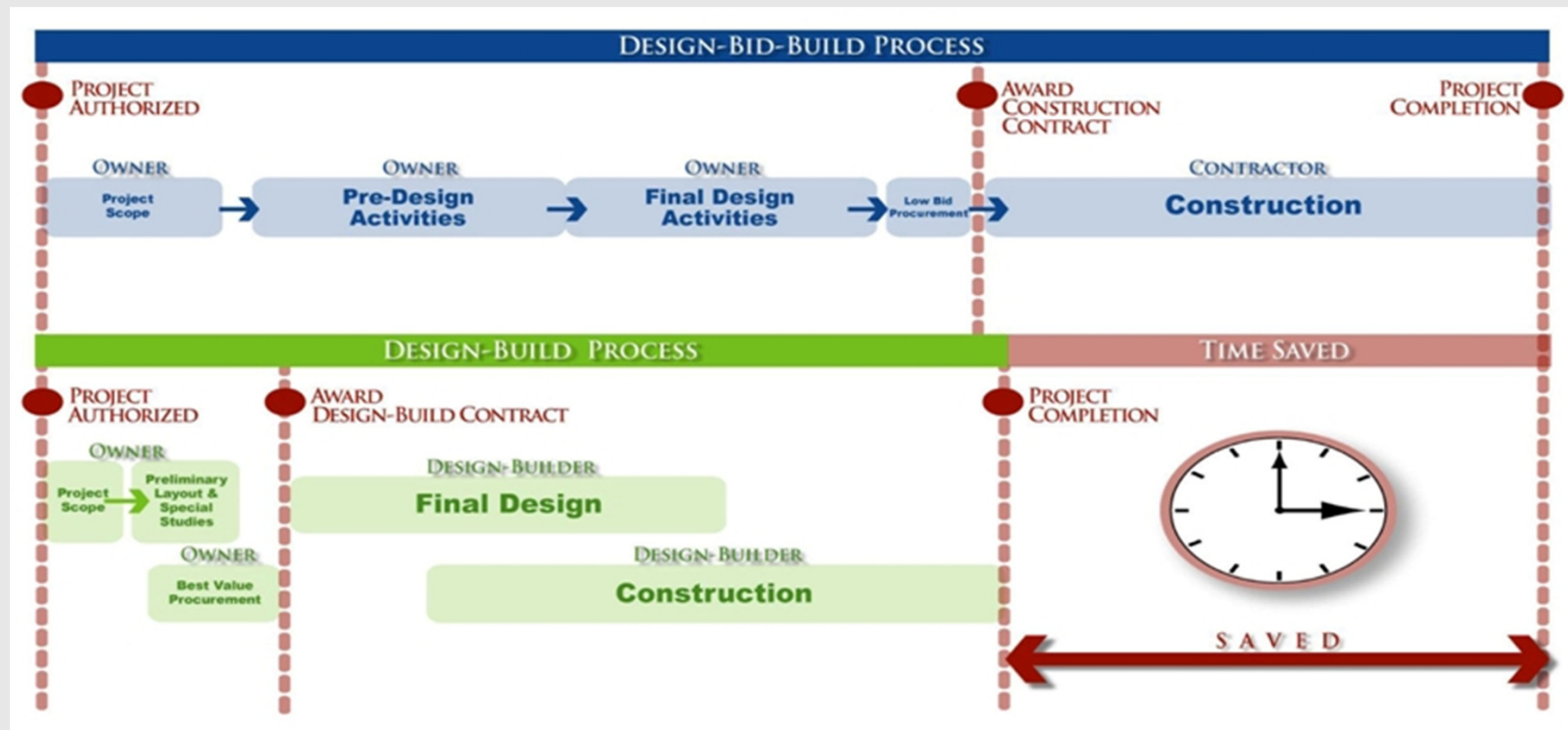


VS.



Source: Design Build Institute of America

DESIGN BUILD CONTRACTING MODEL



KEY DIFFERENCES IN DELIVERY MODELS

Traditional Delivery	Design-Build Delivery
Client is responsible for the Design	Design-Builder is responsible for the Design
Estimate is developed from completed plans	Estimate is developed from 10-30% plans
Client is solely responsible for Major Permits, Utility Relocations and ROW Acquisition	Design-Builder may take over responsibility for these items upon Award
Design Changes or Unforeseen Conditions are a Change Order	Almost no Change Orders; Risk belongs to the Design-Builder
Typically a long, linear progression to completion	Accelerated delivery by overlapping the Permitting, Design, and Construction phases

BENEFITS OF DESIGN-BUILD

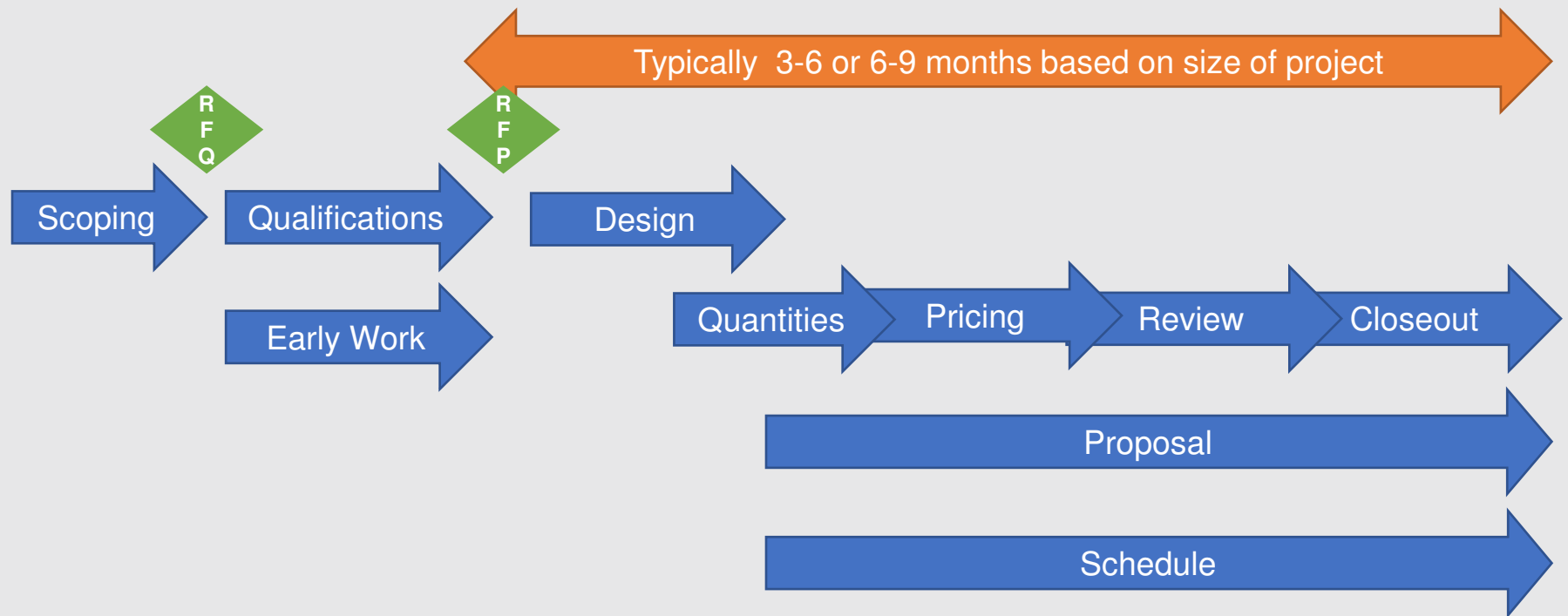
Benefit to the Client	Challenge for the Design-Builder
Accelerated Delivery	Schedule Impacts from Permitting, Design, Utility, or ROW delays
Price Certainty	Increased Cost from Quantity Growth or Unforeseen Conditions
Transfer of Design Responsibility	Schedule and/or Cost Impacts from “Design Preferences”
Reduced responsibility for Delivery	Increased overhead and responsibility to proactively solve problems
Improved Quality	Responsibility for long-term maintenance

Benefits to the Design-Builder
Known competition – better probability of success
Ability to influence the design to fit our strengths
Participation in world-class projects

EXPECTATIONS ON DESIGN-BUILD PROJECTS

- Confidentiality
- Ability to estimate based on preliminary plans
- Partnering – strong relationships and trust
- Communicate – early and often
- Higher level of service and satisfaction
- Ability to work in a dynamic environment

ESTIMATING PROCESS



RFQ = Request for Qualifications
RFP = Request for Proposals

DESIGN PROCESS

- Design is progressed in stages – 30%, 60%, 90%, and IFC
- Reviews are performed at each stage by the Client and authorized 3rd Parties
 - Reviews can take from 2 weeks to 1 month or longer
- Design moves quickly and in some cases is not as complete as in the traditional delivery method
 - Field Design Change (FDC)
 - Notice of Design Change (NDC)
 - Non-Conformance Report (NCR)

IT IS EXTREMELY IMPORTANT TO BE ENGAGED EARLY AND MAKE COMMENTS BEFORE IT IS TOO LATE.

CONSTRUCTION PROCESS

- Coordination and Communication are key to success
 - Each subcontractor is assigned a counterpart from the Design-Builder
 - Integrated and Accurate 90 Day and 3 Week Schedules updated regularly
 - Daily Play-of-the-Day Meetings to communicate the plan to the crew
 - Daily Coordination Meetings to work out the plan for tomorrow
- Quality Control and Quality Assurance are required
- Phasing and Access are complicated
- Last minute changes require flexibility

TAKE-AWAYS

- Integration, Collaboration, and Communication are critical at each step
- Constructability input during design makes construction easier
- Being dynamic and willing to adapt is required
- Experience and thinking outside the box to come up with win-win solutions will ensure success

DESIGN BUILD RESOURCES AND REFERENCES

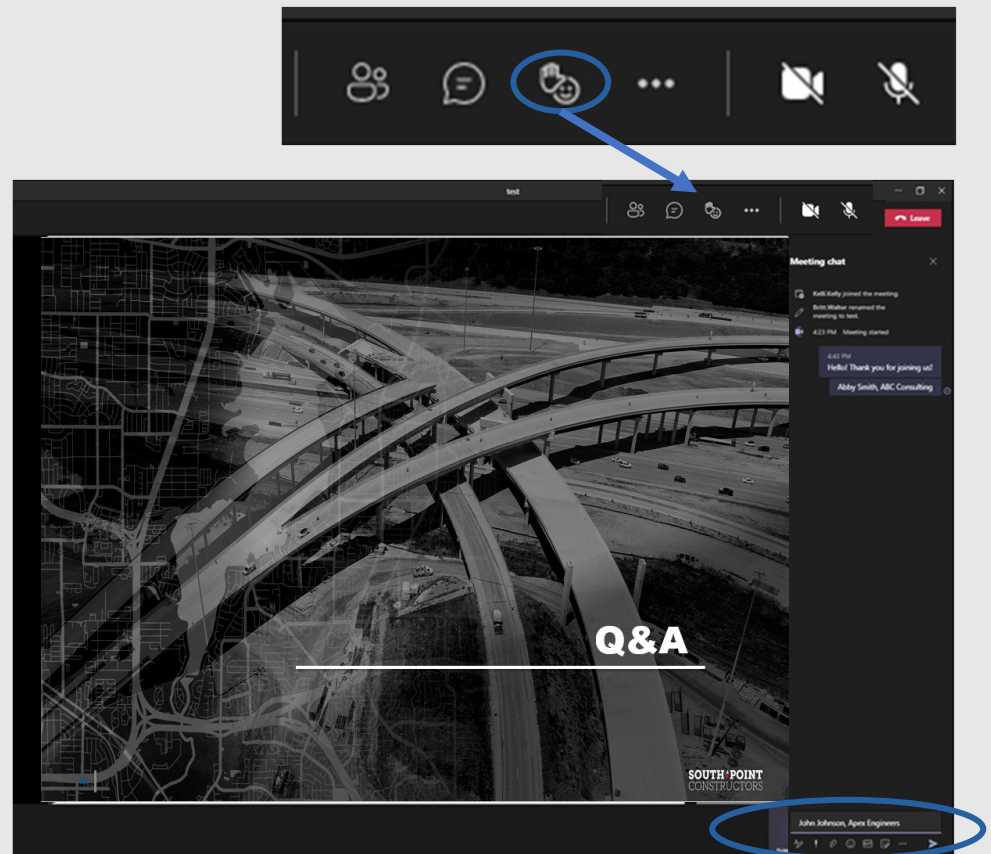
Design Build Organizations and Documents

- [Design Build Institute of America](#)
- [Federal Highway Administration – Center for Accelerating Innovation: Design Build Fact Sheet](#)
- [TxDOT Design Build Procurement Overview Manual](#)
- [Design-Build Highway Projects: A Review of Practices and Experiences](#)
(Published by Texas A&M Transportation Institute)

QUESTIONS?

Please type your questions in the Meeting chat panel on the right or click the “raise hand” icon in the Teams toolbar.

One of our moderators will direct to the appropriate presenter.





Q&A

SOUTH POINT
CONSTRUCTORS

RESOURCES AND ASSISTANCE

South-Point Constructors is committed to providing information and resources to assist firms seeking opportunities to participate on the Southeast Connector project.

“Roadside Assistance” Workshop Series:

- 2/18 - Certification*
- 2/25 - Navigating Building Connected*
- 3/11 - Design-Build Delivery Overview
- 3/18 - Safety: Operating in a COVID-19 Environment

**Please visit our website to access videos of past workshops.*

The screenshot displays the South-Point Constructors website. The top navigation bar includes links for 'Our Team', 'Subcontract Opportunities', and 'Work with SPC'. The main header features the company logo and the tagline 'Connected. Committed. Constructors.' Below this, a 'Resources' section is highlighted. To the right, a 'BIDDERS QUICK REFERENCE GUIDE - NEXT STEPS AND RESOURCES' is available. A 'JOIN OUR BIDDERS LIST!' section provides instructions for interested bidders. The central focus is 'THE ROADSIDE ASSISTANCE WORKSHOP SERIES', which is described as a joint venture between Kleinfelder Infrastructure South Co. and Austin Bridge & Road L.P. The series aims to provide resources, information, and support to local, small, and diverse businesses seeking opportunities to participate on the project. A list of workshop dates and topics is provided, including 'Certification', 'Navigating BuildingConnected Bidding Platform', 'Design Build Delivery Method Overview', and 'Safety: Operating in a Covid-19 Environment'. A 'WE'RE BUILDING MORE THAN ROADS' section at the bottom emphasizes the company's commitment to supporting small and diverse businesses.

COVID-19

- Americ
- Google
- SBA.Cc
- Small E
- U.S._Ch

Business

- Dallas.F
- SCORE
- Small E

THE ROADSIDE ASSISTANCE WORKSHOP SERIES

SOUTH-POINT CONSTRUCTORS, a joint venture between Kleinfelder Infrastructure South Co. and Austin Bridge & Road L.P., is assembling a team to respond to the Request for Proposals issued by TxDOT for the delivery of the Southeast Connector Design-Build Project.

SPC has launched a "Roadside Assistance" Workshop Series to provide resources, information, and support to local, small, and diverse businesses seeking opportunities to participate on the Project.

Workshops will be delivered as brief but informative webinars, followed by a question and answer period with our subject matter experts.

A list of workshop dates and topics are below. Please click workshop title to reserve your spot. **REGISTER NOW!**

- FEBRUARY 18, 2021 AT 1 P.M. CST**
Roadside Assistance Workshop: Certification
Interested in learning about the DBE certification process? Join us for an overview of the certification process and benefits of certification presented by the North Central Texas Regional Certification Agency (NCTRCA).
- FEBRUARY 25, 2021 AT 11 A.M. CST**
Roadside Assistance Workshop: Navigating BuildingConnected Bidding Platform
New to the BuildingConnected bid platform? Join us for a system demo to learn how to set up an account, access project and bid documents, and submit your bids.
- MARCH 11, 2021 AT 1 P.M. CST**
Roadside Assistance Workshop: Design Build Delivery Method Overview
Join us for an overview of the Design Build delivery method. Learn about contract structure, procurement schedule and process, and key considerations for small firms.
- MARCH 18, 2021 AT 1 P.M. CST**
Roadside Assistance Workshop: Safety/Operating in a Covid-19 Environment
Join us to hear from a safety expert about best practices and resources to keep your workforce safe in the workplace and jobsite.

WE'RE BUILDING MORE THAN ROADS

South-Point Constructors believes in partnering and investing in the local, small, and diverse businesses in the communities where we work and live. We will maximize opportunities for local DBE firms through dividing work into economically feasible packages to assist small and diverse-owned businesses and ensure equitable and meaningful participation. Actively seeking out diverse businesses that will bring additional value to the project. Building upon new and existing subcontractor relationships to grow long-term partnerships. Fostering the development and growth of existing and potential diverse business partners, and Partnering with community and industry organizations focused on supporting small and diverse businesses.

*Subcontract opportunities are contingent upon award of the project to SPC.

South-Point Constructors is an Equal Opportunity Employer.

outreach@southpointconstructors.com | www.SouthPointConstructors.com

THE SOUTHEAST CONNECTOR PROJECT

CONNECT WITH SOUTH-POINT



EMAIL

Outreach@SouthPointConstructors.com



VISIT

SouthPointConstructors.com

SOUTH-POINT EVENTS

Date	Event	Purpose/Description
February 18, 1pm CST	Roadside Assistance Workshop – Certification	Learn about DBE certification process and benefits
February 23, 2pm CST	SPC General Outreach Session #2	Repeat Presentation
February 25, 11am CST	Roadside Assistance Workshop – Building Connected	Learn how to set up and navigate a BuildingConnected account
March 8	Design Discipline/Scope specific outreach	Design and professional services firm focused outreach event
March 9	Construction Discipline/ Scope specific outreach	Construction firm focused outreach event
March 10-12	Subcontractor One-on-ones (Limited slots available on first come, first served basis)	15-min individual meetings with estimating, discipline leads, outreach team <ul style="list-style-type: none"> • Firm introductions • Scope specific questions
March 11, 1pm CST	Roadside Assistance Workshop – Design Build	Hear an overview of the design-build delivery process and key considerations for small businesses
March 18, 1pm CST	Roadside Assistance Workshop – Safety in a COVID-19 Environment	Hear best practices to maintain workplace and worksite safety in a COVID-19 environment

AIM YOUR SMART PHONE
CAMERA HERE
TO ADD US TO YOUR
CONTACTS.



THANK YOU!